

Advanced Firewall settings for SMB scanning with Windows 7.

When troubleshooting SMB scanning, you may have to adjust the advanced firewall settings. The main cause is the MFP and the Windows7 computers are on different networks. For example, the MFP has an IP address of 192.168.16.2 and the Windows 7 computer has an IP address of 192.168.17.2. Windows 7's firewall will block SMB traffic in this case. In addition to adding an exception for "File and Printer Sharing" in the firewall, you will have to follow these steps.

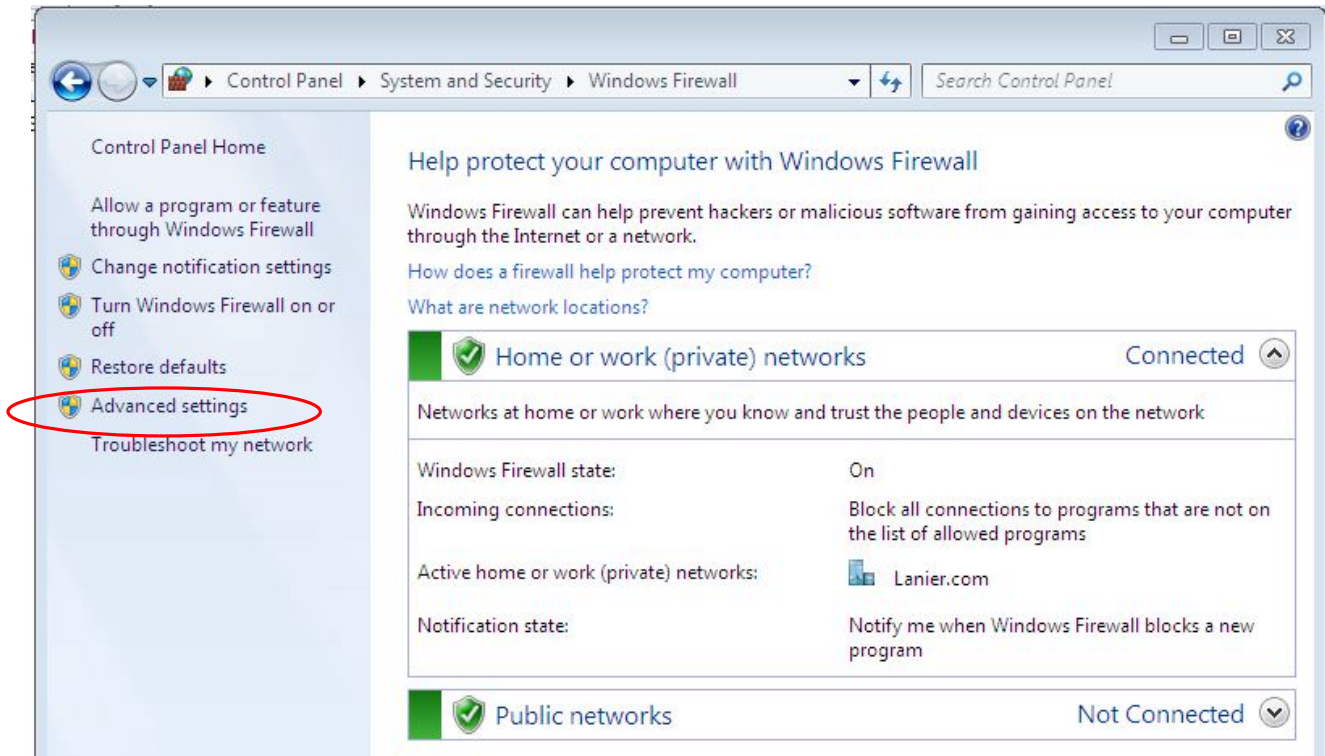
1. Click on the "Start" menu and select "Control Panel". Click "System and Security".



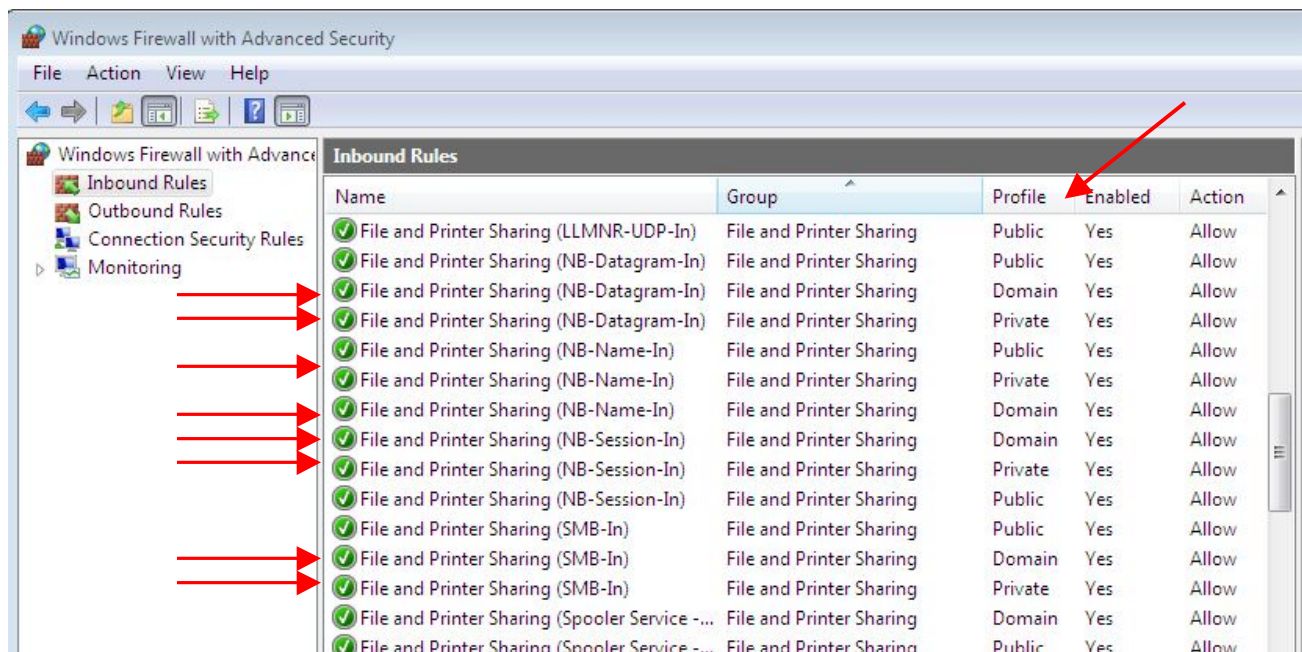
2. Click "Windows Firewall".



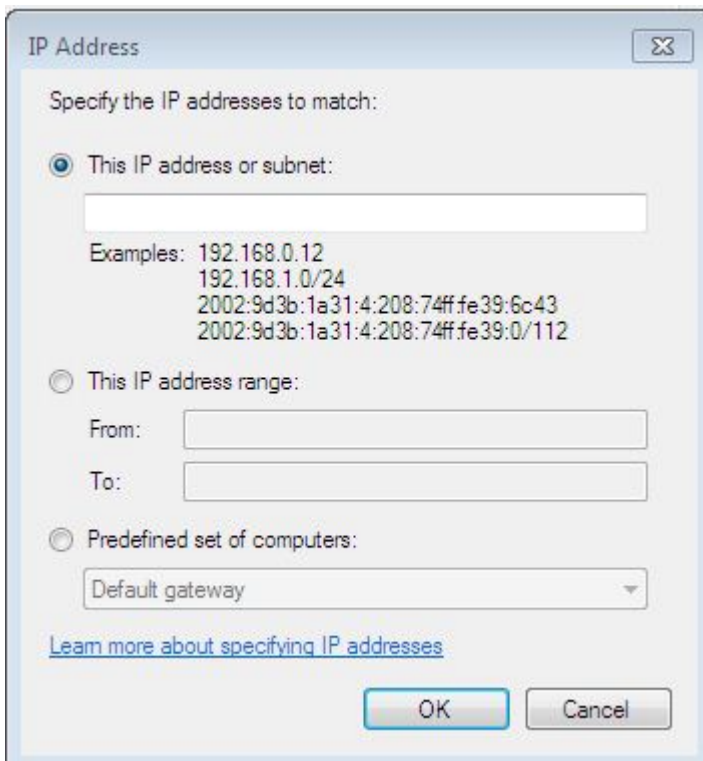
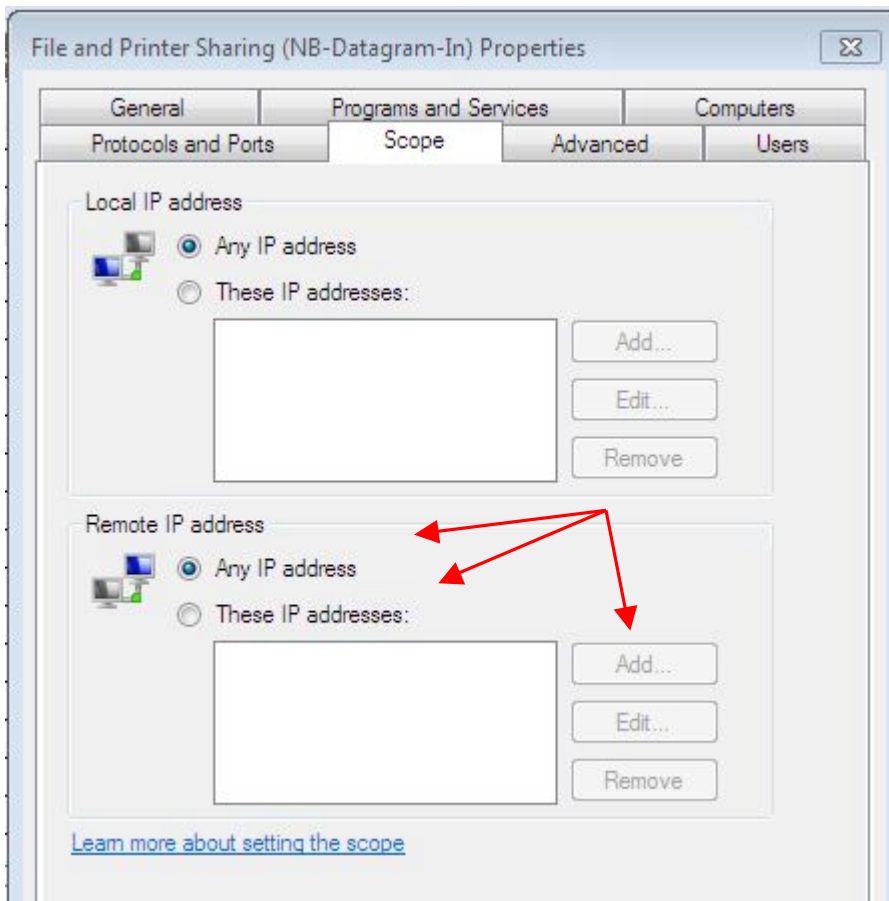
3. Select “Advance settings”.



There are four settings in “File and Printer Sharing” that you will have to adjust.



4. Double click on “File and Printer Sharing (NB-Datagram-In)” rule for the “Private and Domain” profiles. Under the Scope tab, select “Any IP address”. You can also enter a specific IP address or range by selecting “These IP addresses” and clicking “Add”. Do the same for “File and Printer Sharing (NB-Name-In)”, “File and Printer Sharing (NB-Session-In)”, and “File and Printer Sharing (SMB-In)”.



Try SMB Scan to folder setup again. If permissions and sharing is setup correctly, then you should have success.