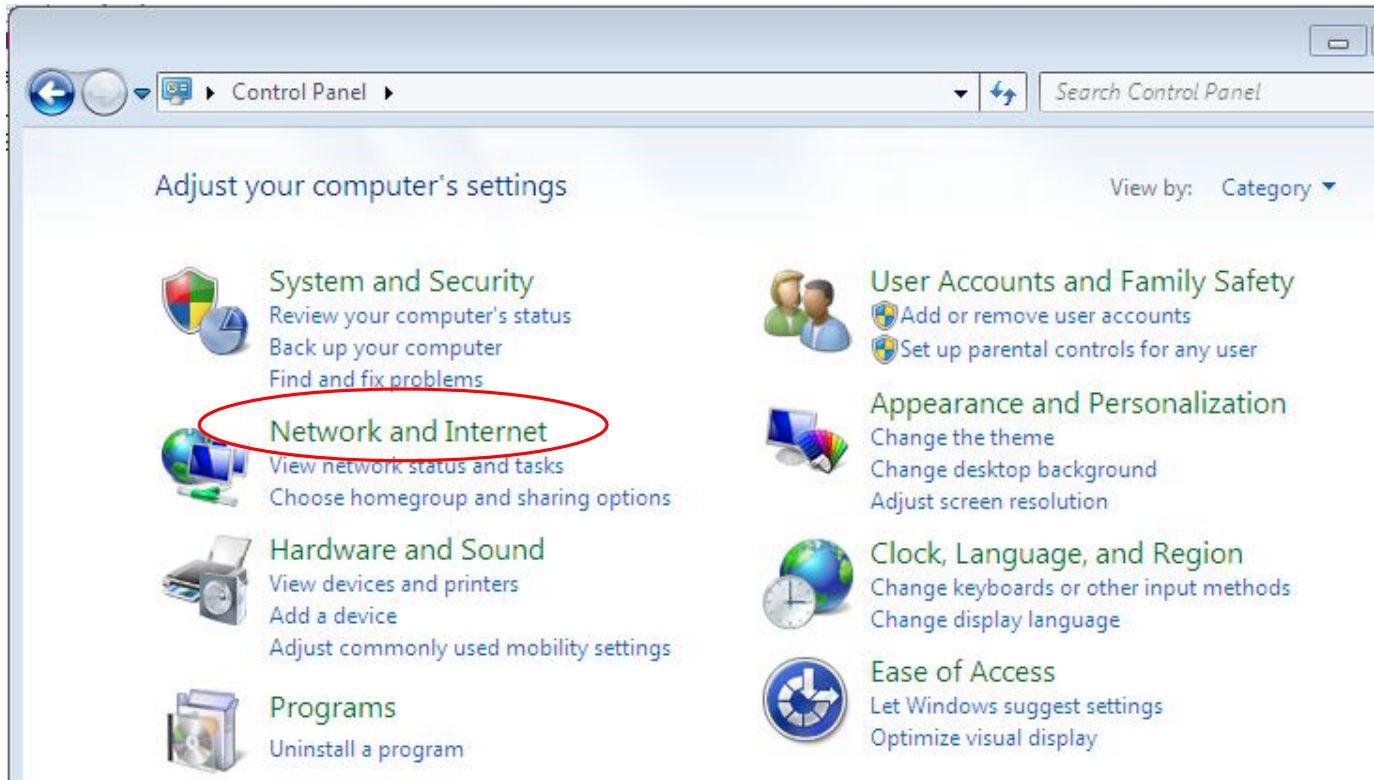
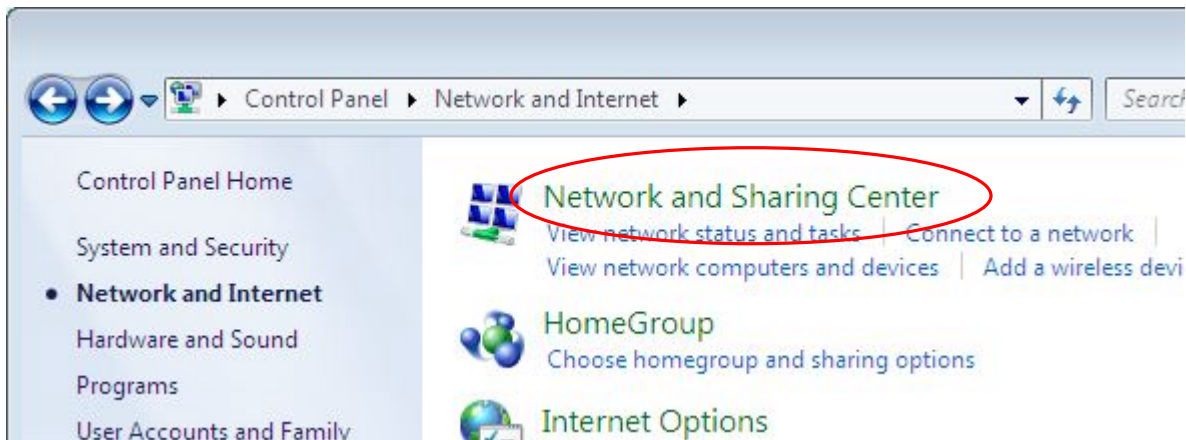


Windows 7 Scan to Folder SMB Setup

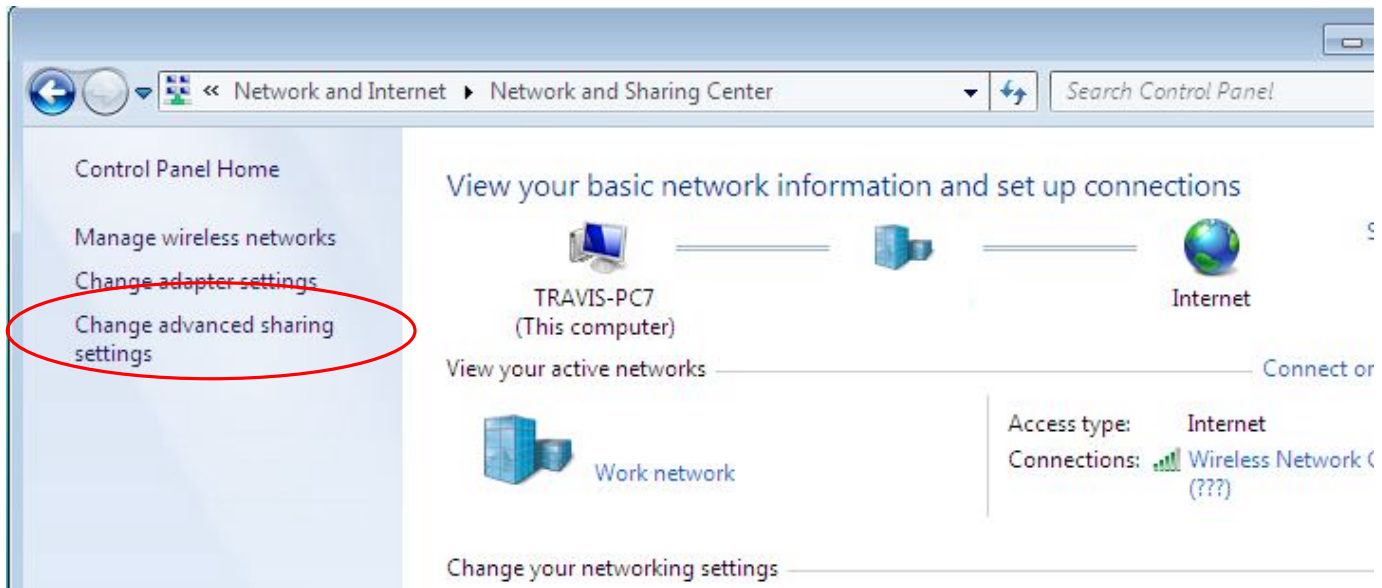
1. First Select "Control Panel" -> "Network and Internet".



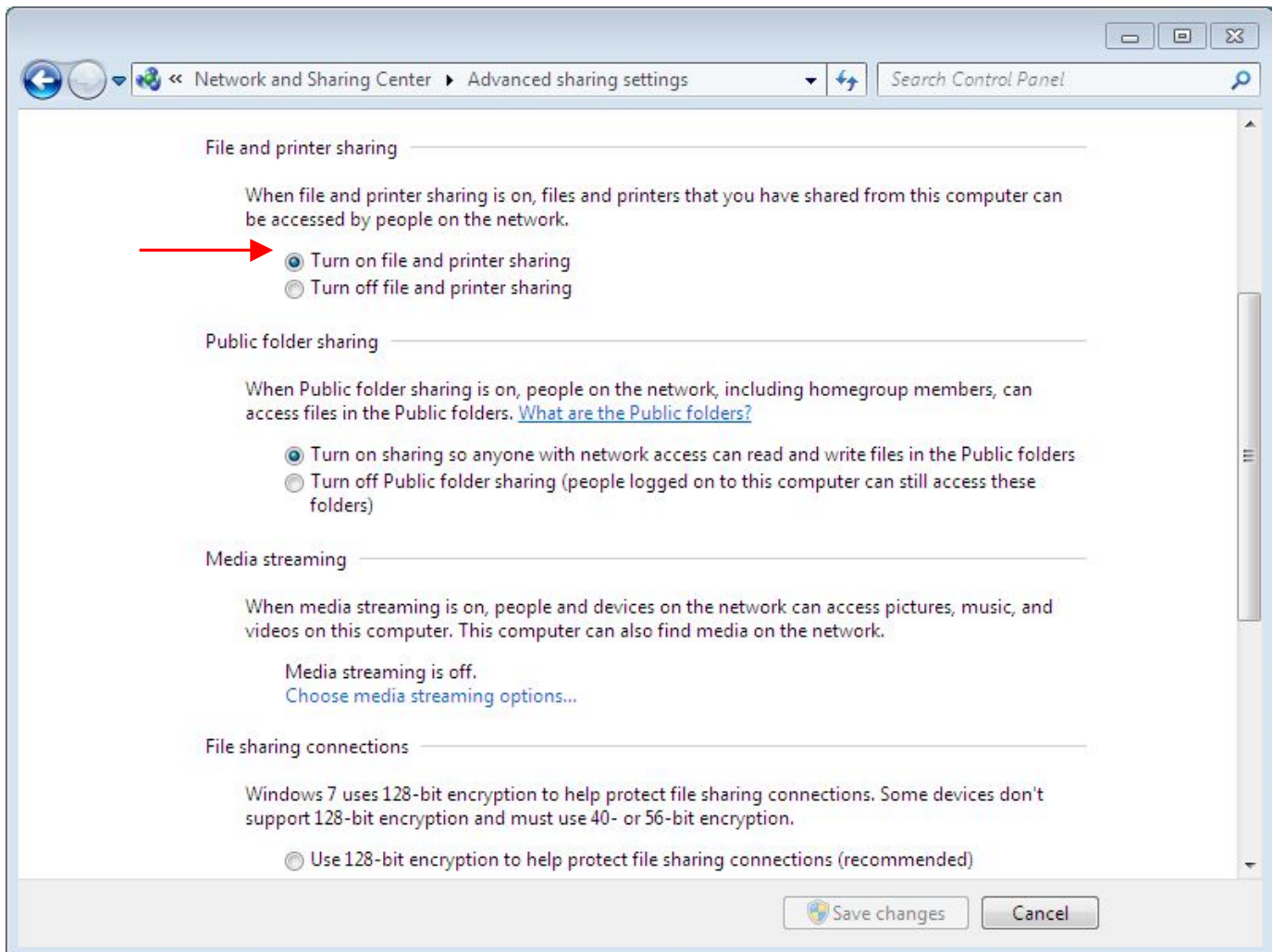
2. Select "Network and Sharing Center".



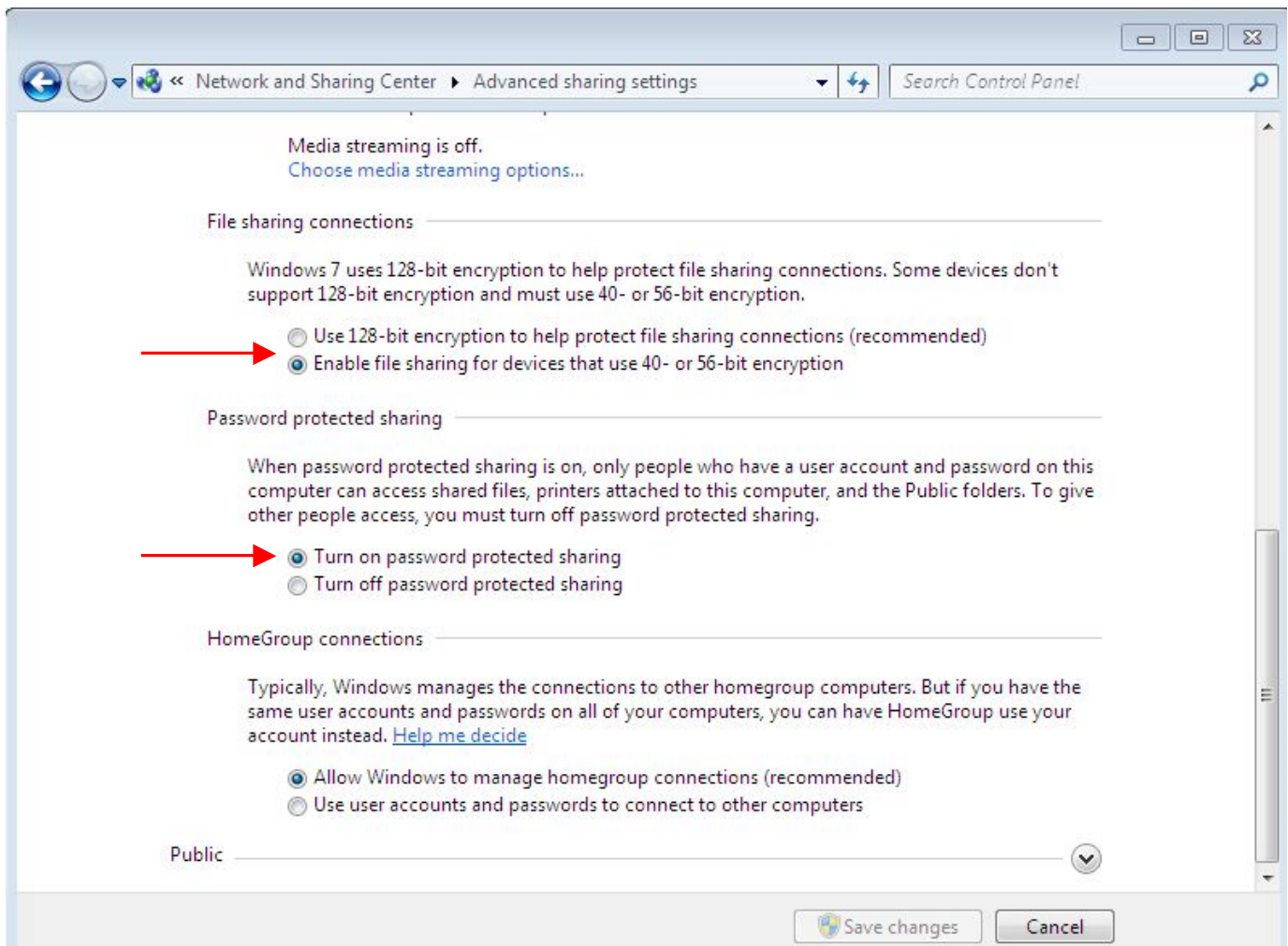
3. Select "Change advanced sharing settings"



4. Make sure "Turn on file and printer sharing" is enabled.

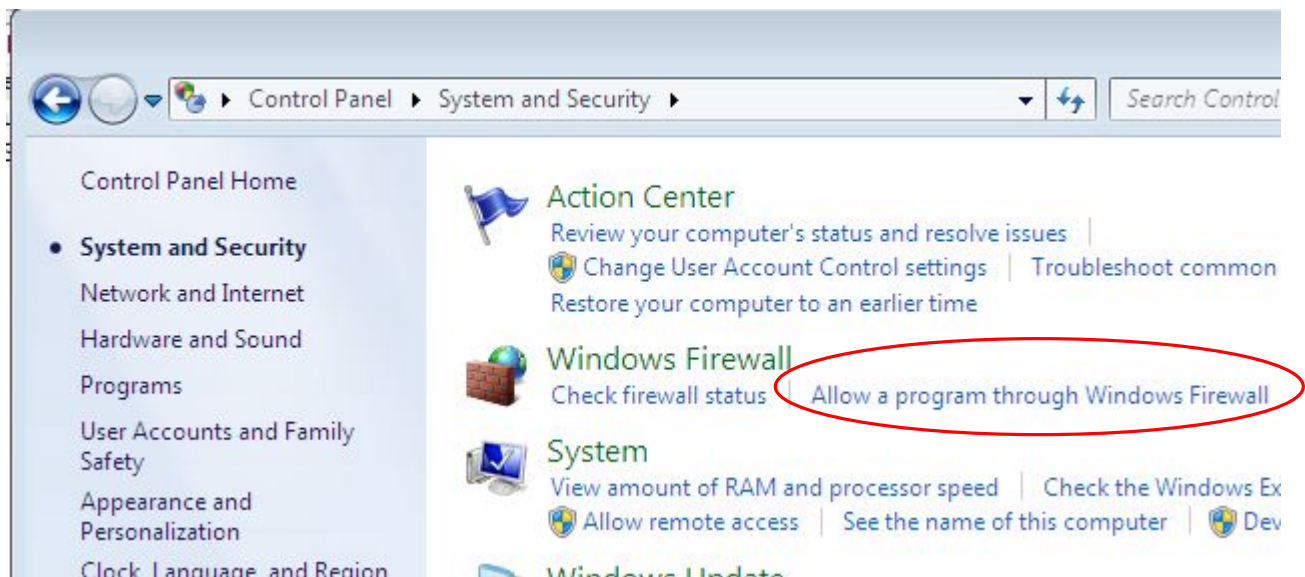


5. Make sure “Enable file sharing for devices that use 40- or 56-bit encryption” and “Turn on password protected sharing” enabled.

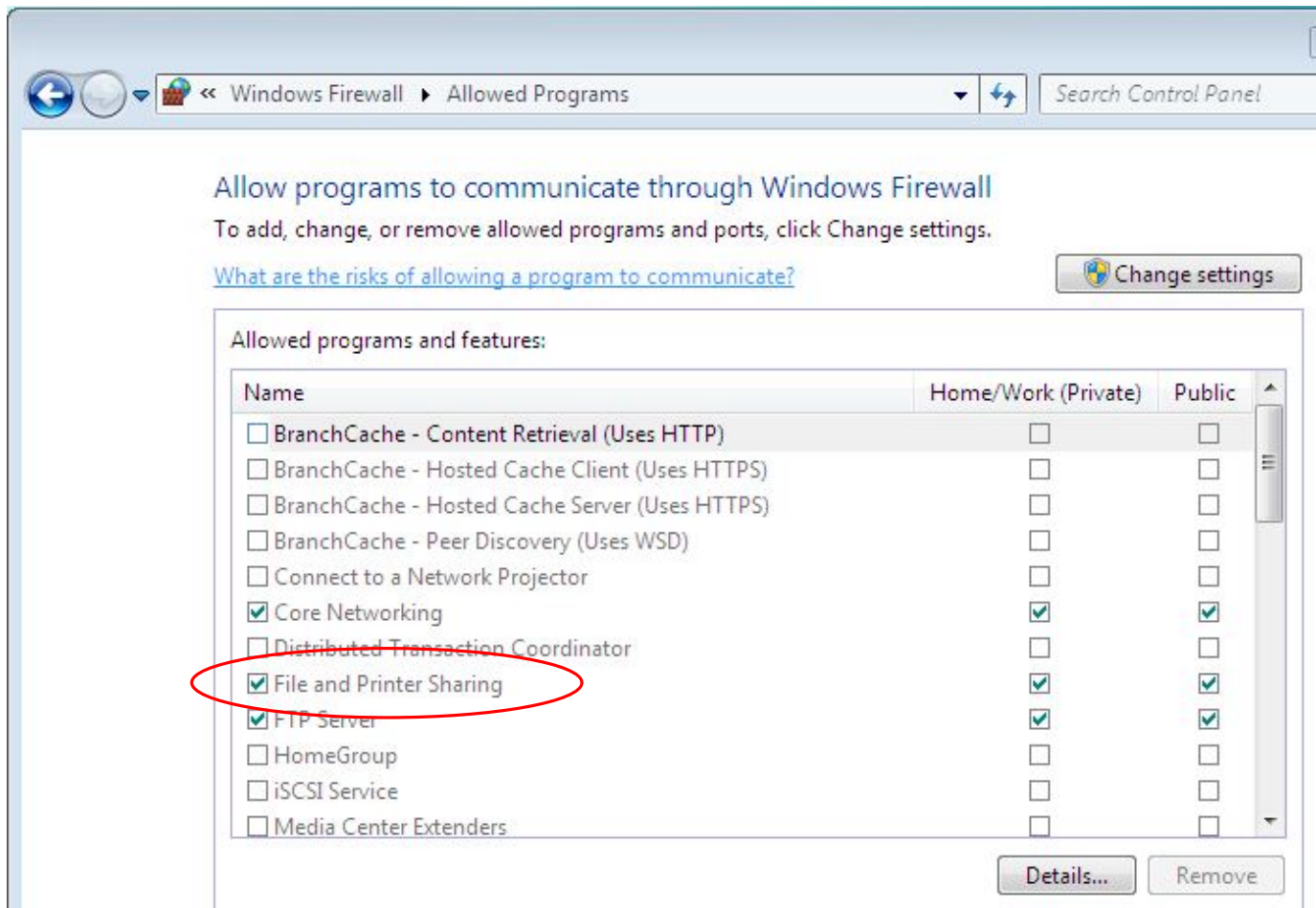


Now let's make the proper firewall settings.

1. Open the “Control Panel” -> “Select System and Security” -> “Allow a program through Windows Firewall”.

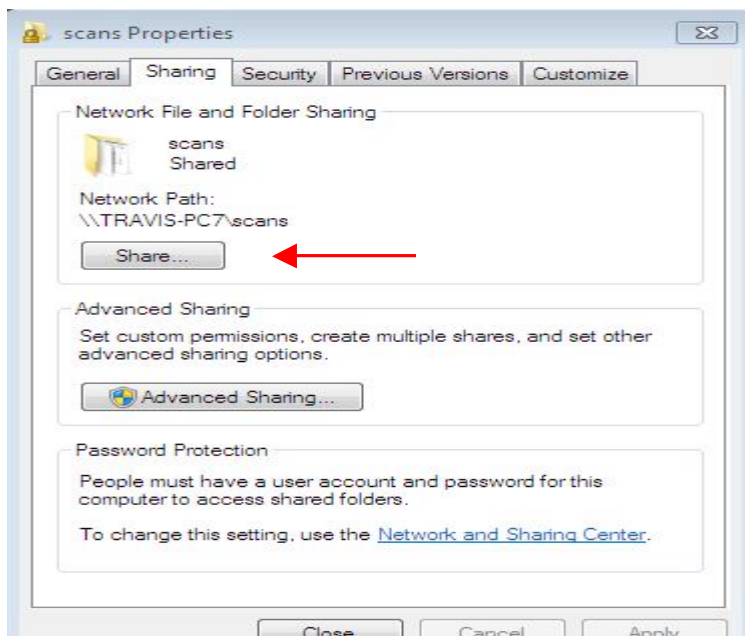


2. Make sure that “File and printer Sharing” is checked.

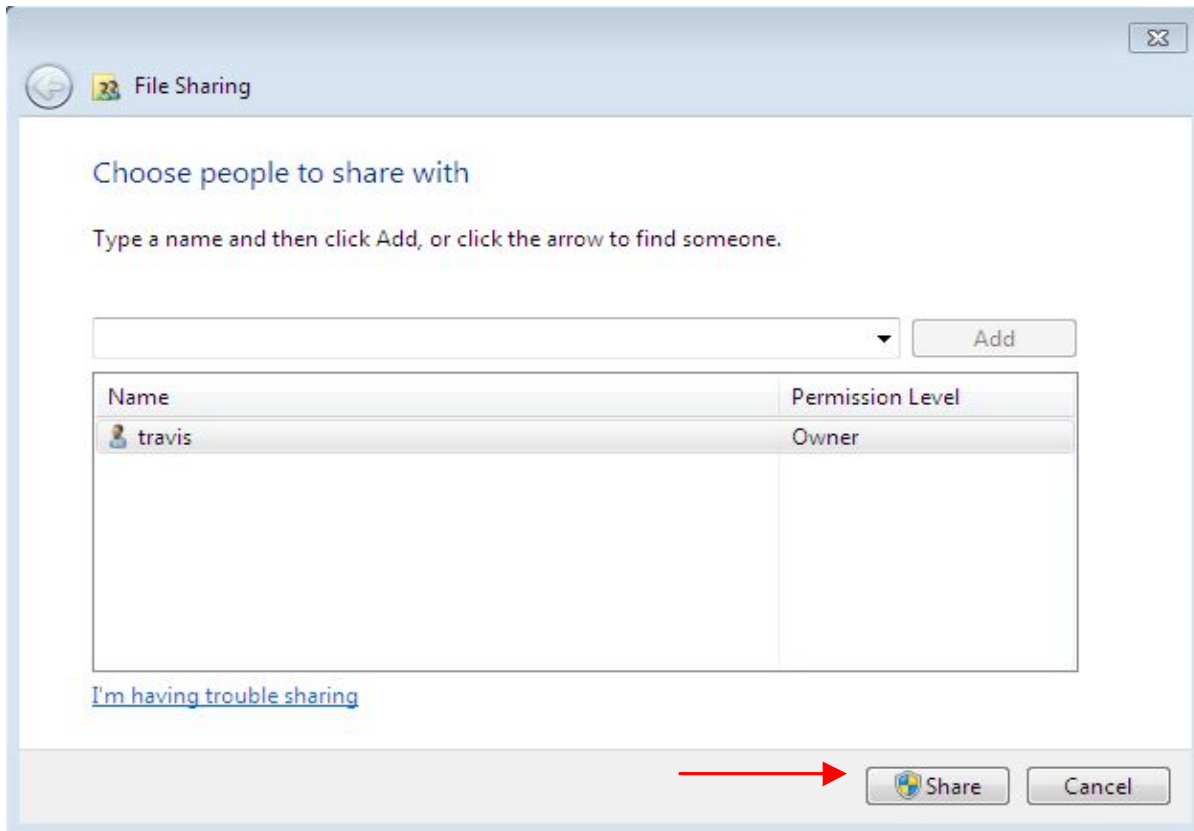


Shared folder setup:

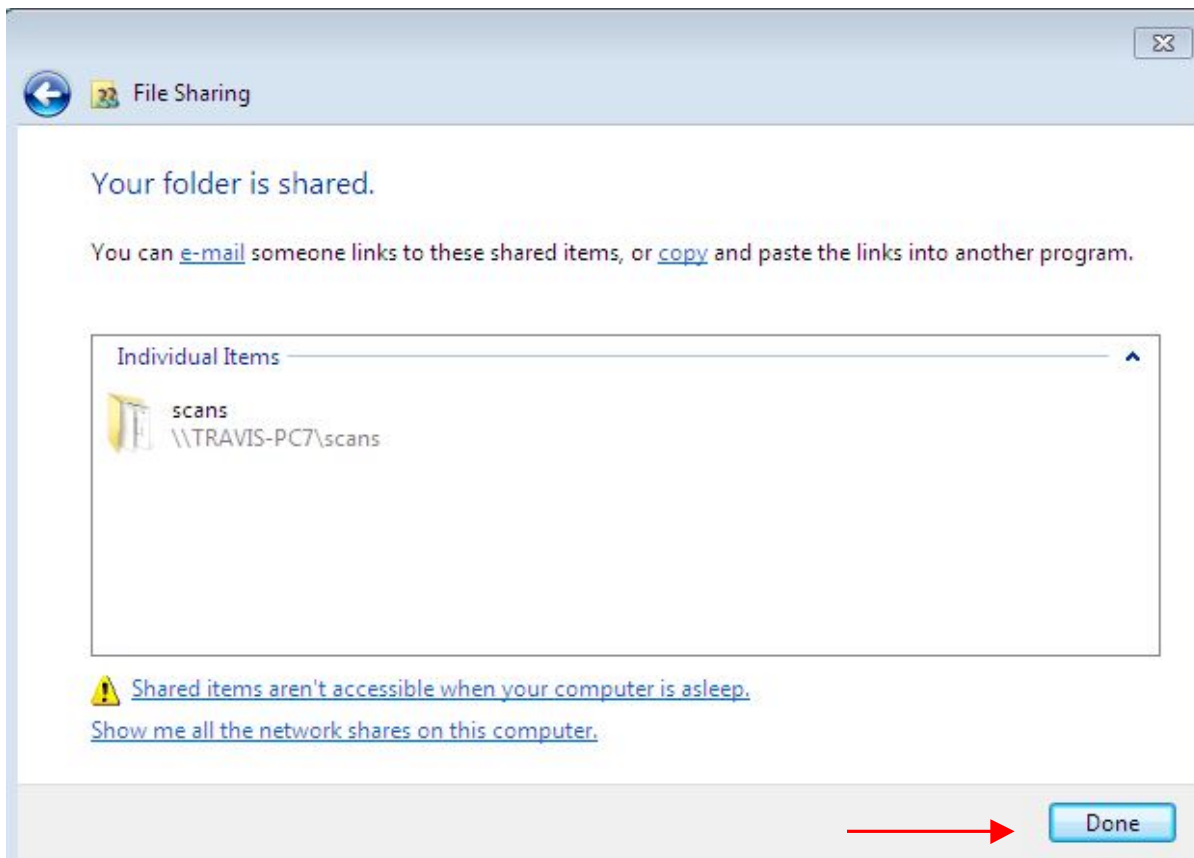
1. Right click on your destination folder and select “Properties”. Select the sharing tab and click the “Share” button.



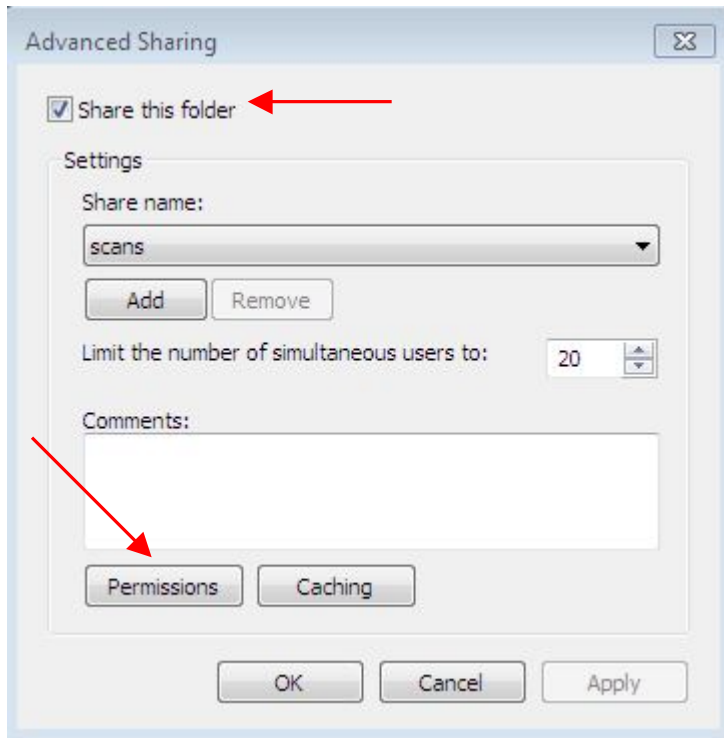
2. Click "Share".



3. Click "Done" after your folder is shared.



4. Click “Advanced Sharing and select the “Share this folder” box.



5. Click “Permissions” and add “Everyone” with Full control. Click “OK” and you’re done. Now you are ready to configure the MFP for scan to folder SMB.

