

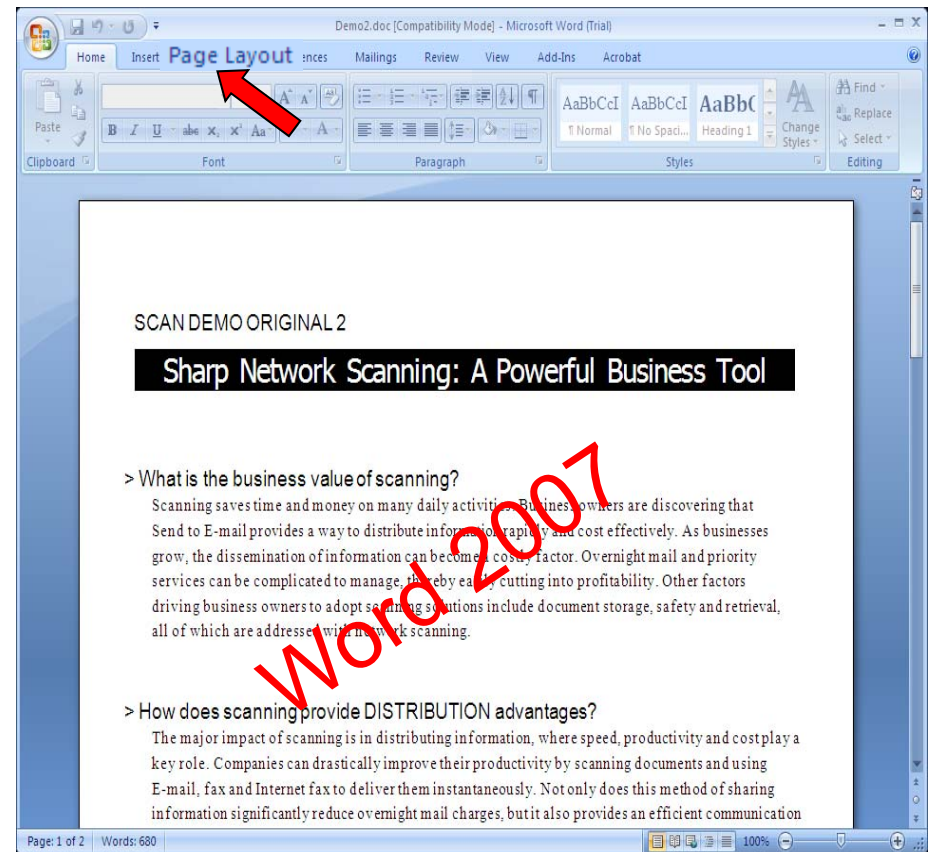
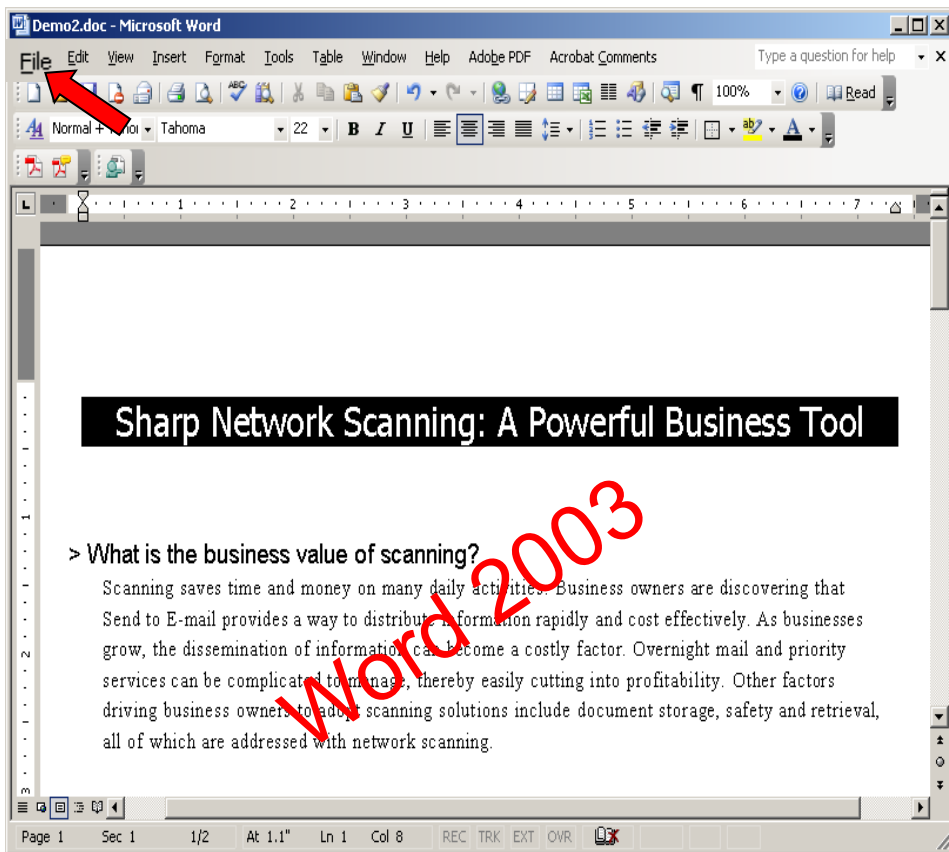


This guide uses Microsoft Word as an example to correct the following:

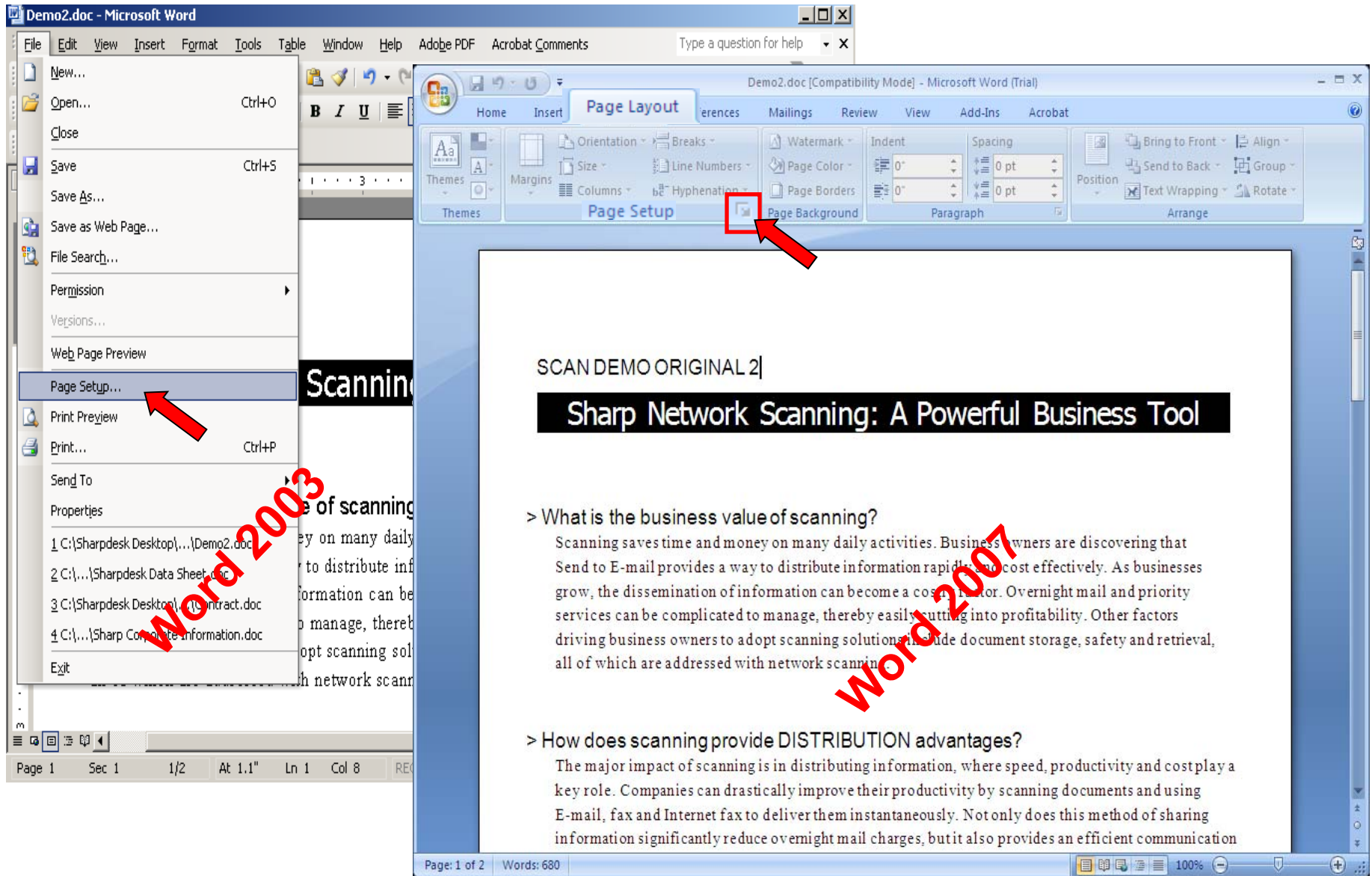
- The printer will not print from the tray selected
- A load paper message appears at the Sharp MFP

If the load paper message appears at the copier or if the copier pulls from the incorrect tray do the following:

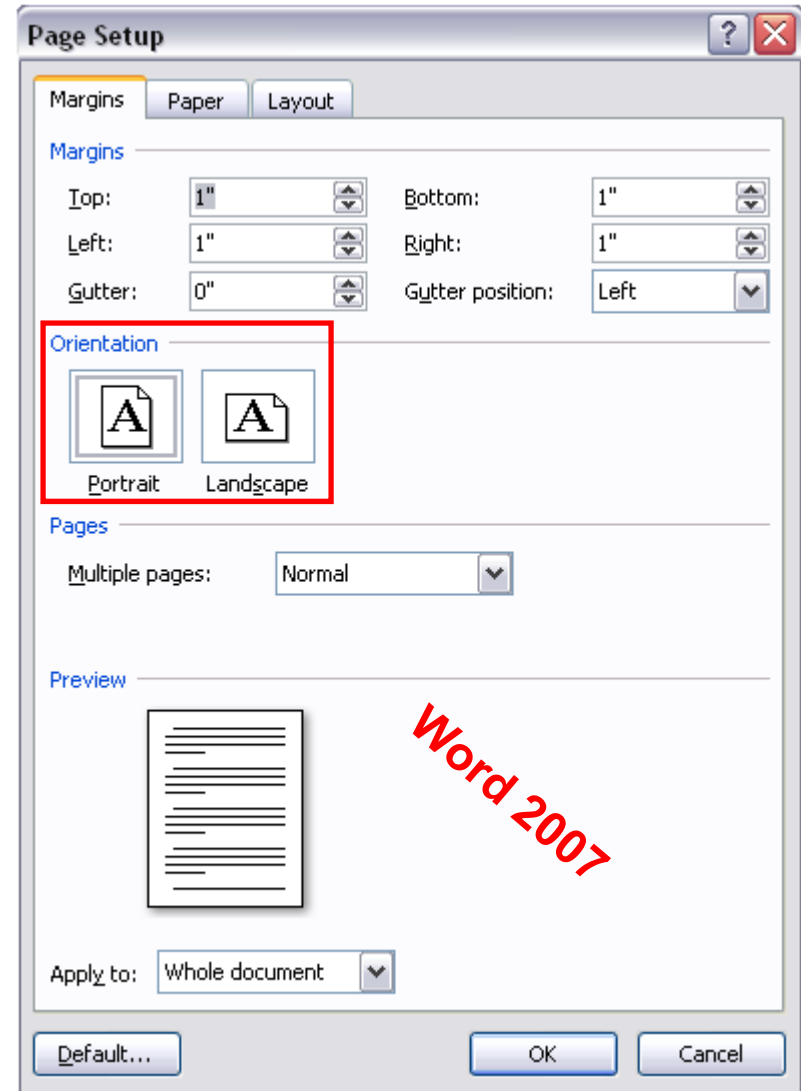
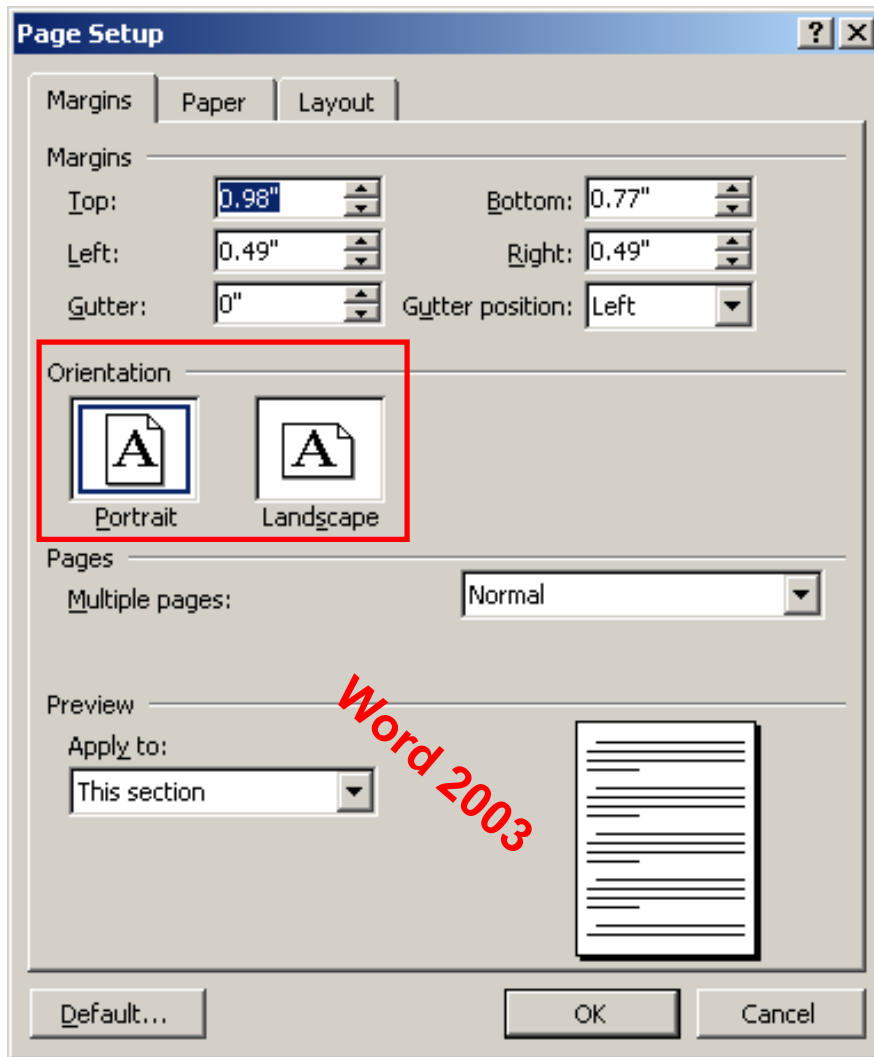
Note: This example uses Microsoft Word 2003 and 2007. Your Word version or program may be different. Regardless of the program being used, the same principle applies. In most cases, the program **will** overpower the printer driver regardless of what printer brand or model is used.



Click Page Setup

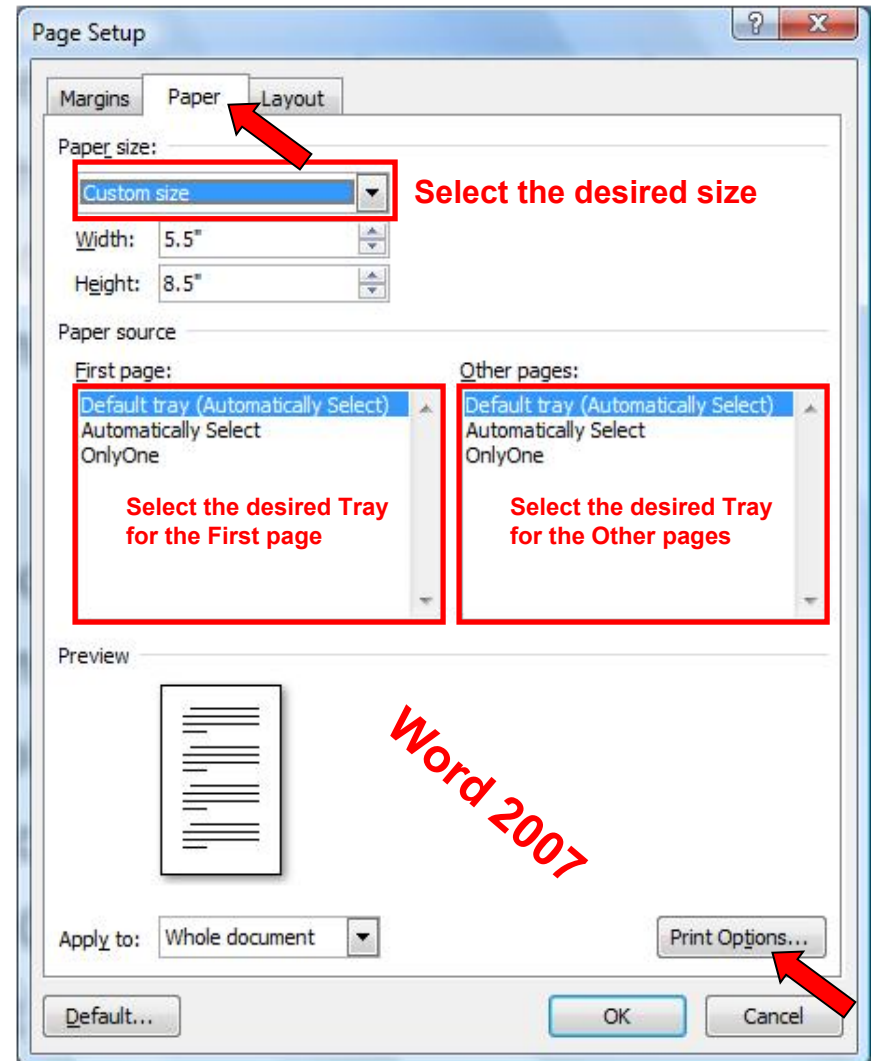
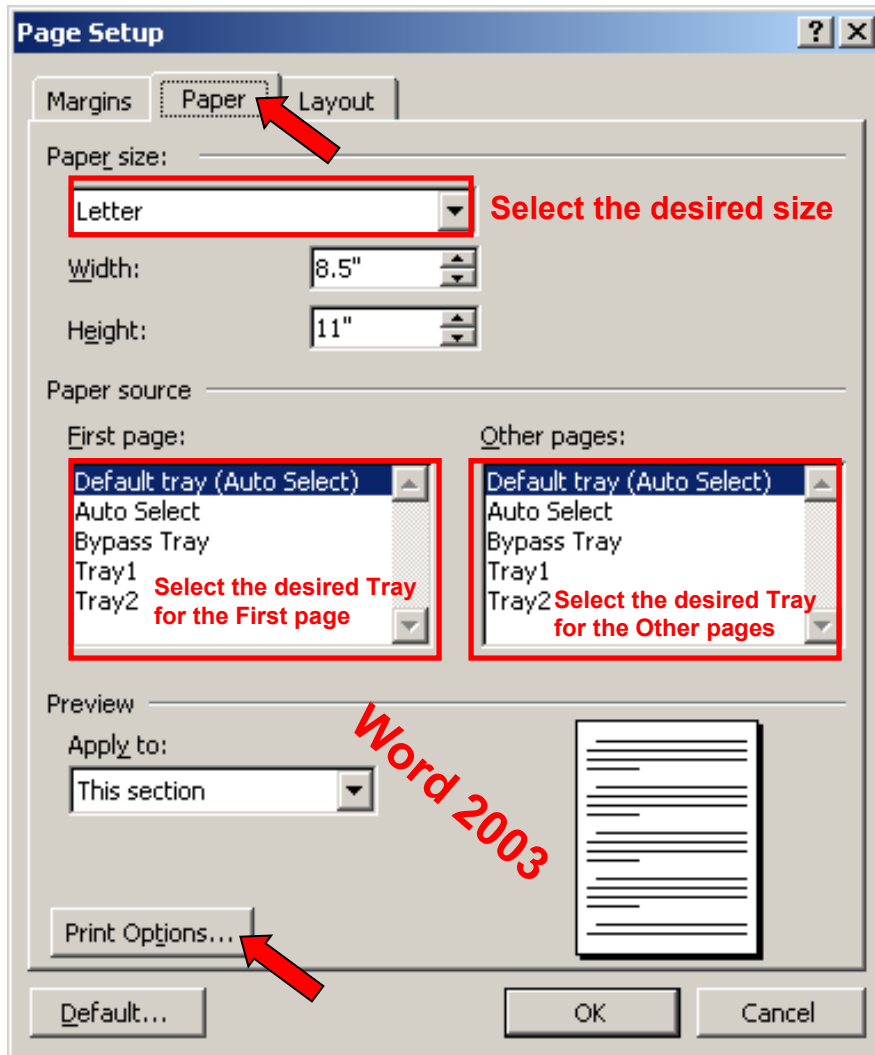


Verify that the Orientation is correct

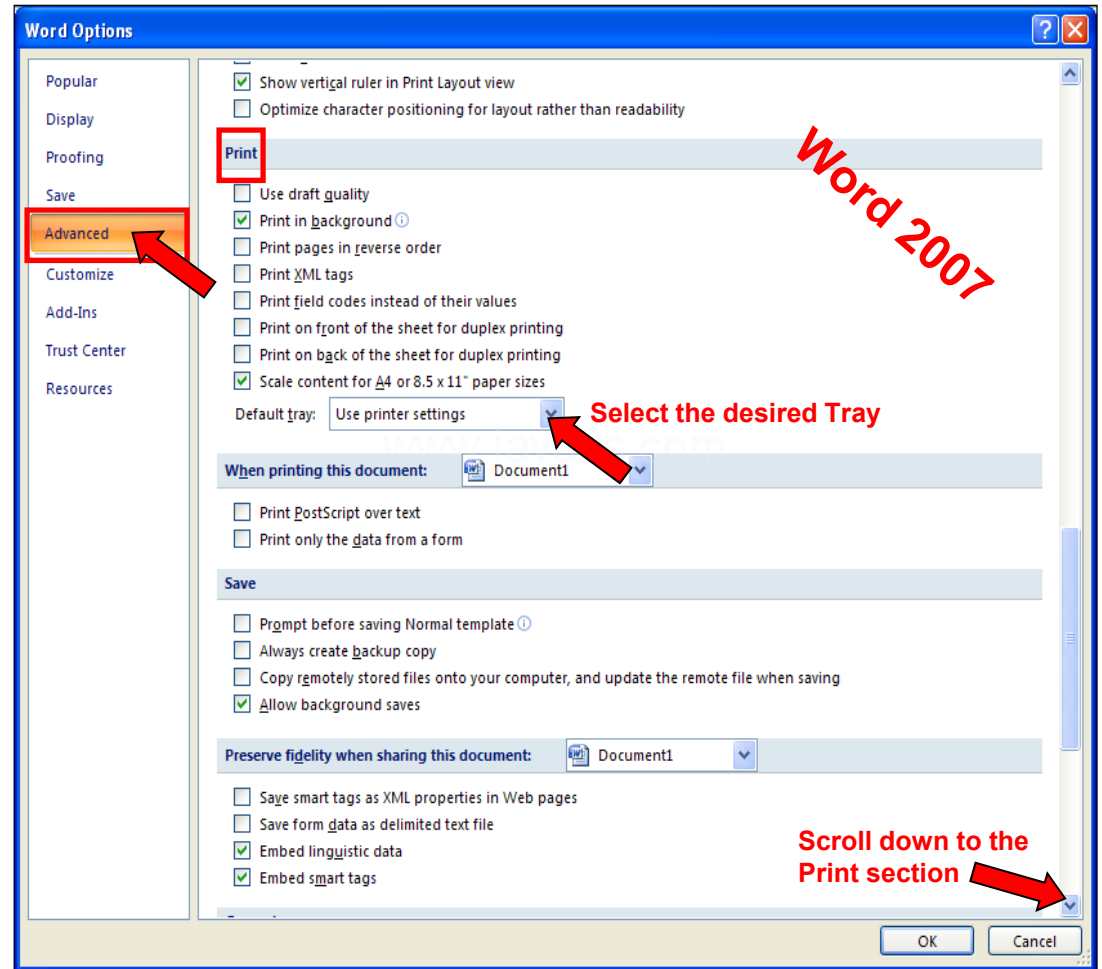
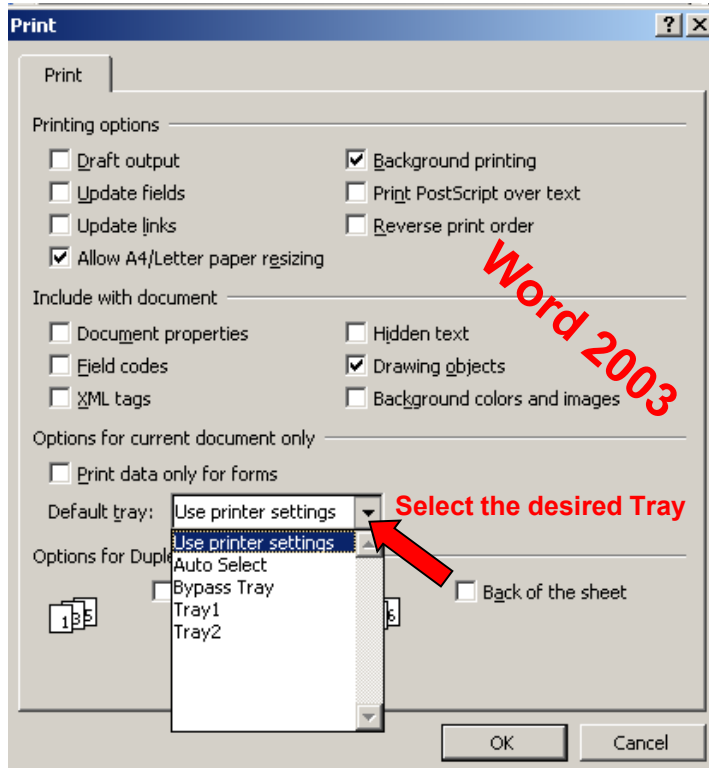


Verify the Paper size and Paper source

Note: You may want to verify the tray settings by clicking the Print Options button found at the bottom of the Paper tab section (see images below).



Verify the Default tray



NOTE: After verifying the above steps, continue to print as usual.