



LES OLSON
C O M P A N Y

Configuring Sharp MFPs for FTP scanning
(For older style web interface)

AR-168, AR-208, AR-M162/207, AR-M237/277, AR-M257/M317, AR-M280/350/450, AR-M355/455, MX-M350/450, AR-M550/620/700, MX-M550/620/700

Configuring the MFP for FTP scanning

Log in to the Sharp Imager's web interface home page by typing the IP address of **your** imager using a web browser such as Internet Explorer.

Note: The IP address shown below is an example only. Yours may be different.

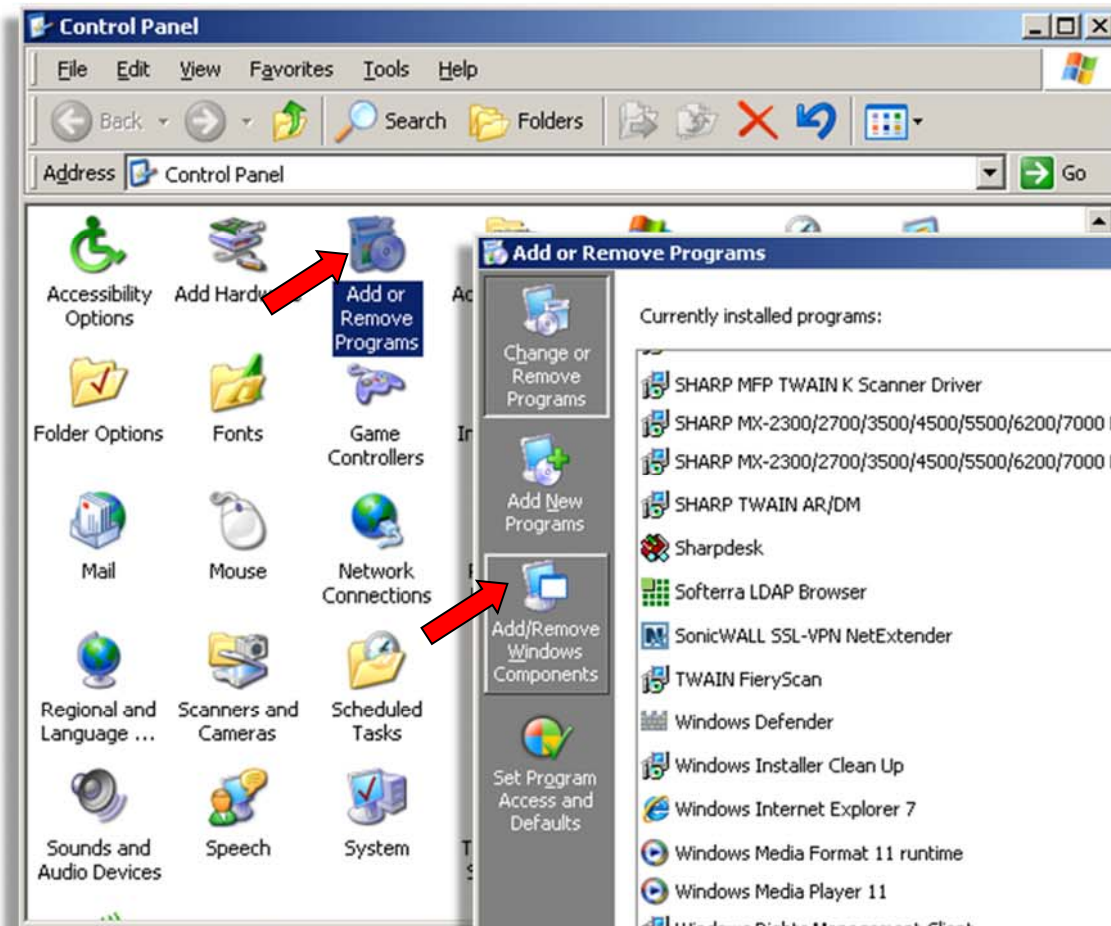
Type the IP address and hit enter

1. Click the FTP link
2. Enter the Name (Required). Note: This will be the display name
3. Enter the IP address or Hostname (computer name) of the computer that is running the FTP service
4. User Name: This is optional for added security. If used be sure to give it full security rights. Sharing rights are not used.
5. Password: If a User Name is used, enter the password (case sensitive)
6. If the FTP site is the default home directory, **no** Directory is needed. If it is a virtual directory, be sure to include the directory name **without a slash** in front.
7. Click the Submit button

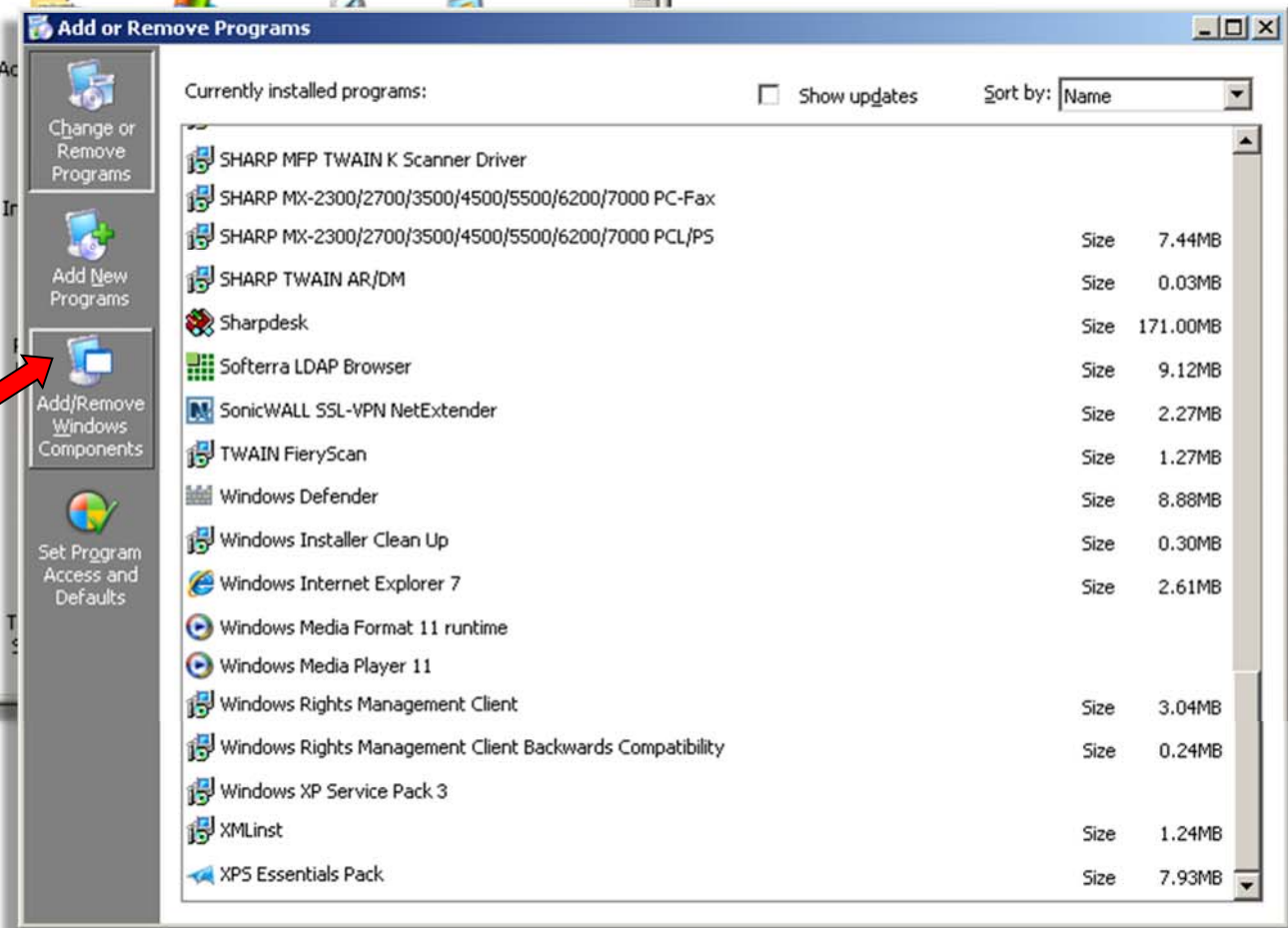
NOTE: To setup FTP services, see the next pages.

Installing FTP services

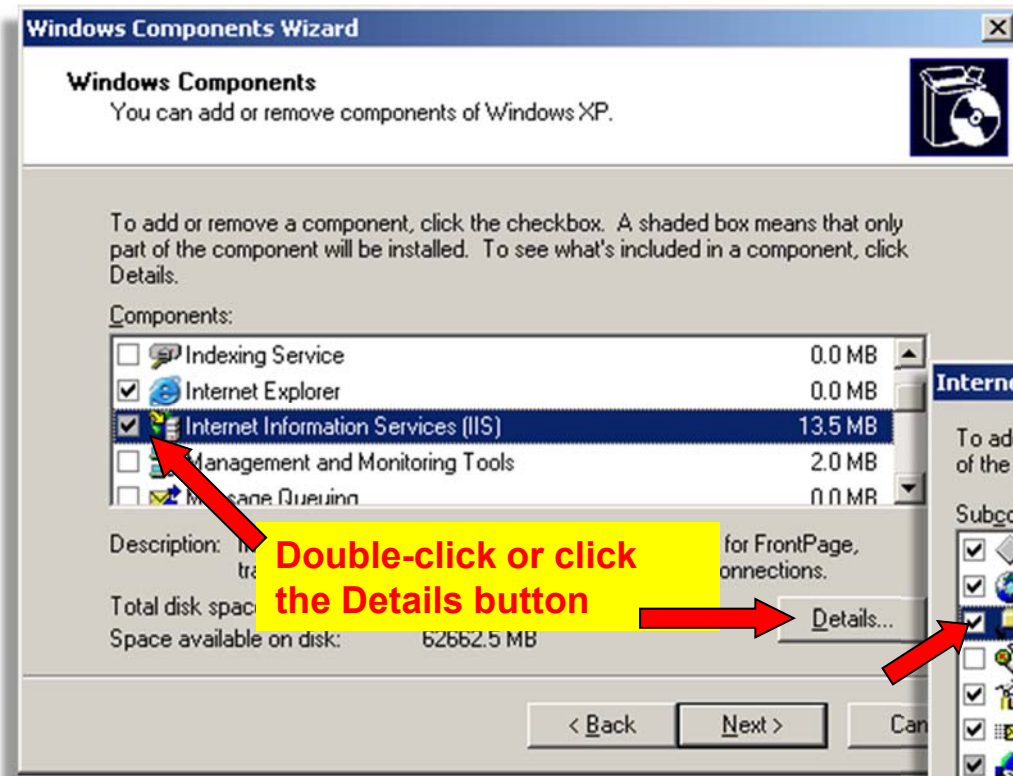
1. In the Control Panel: Double-Click Add or Remove Programs



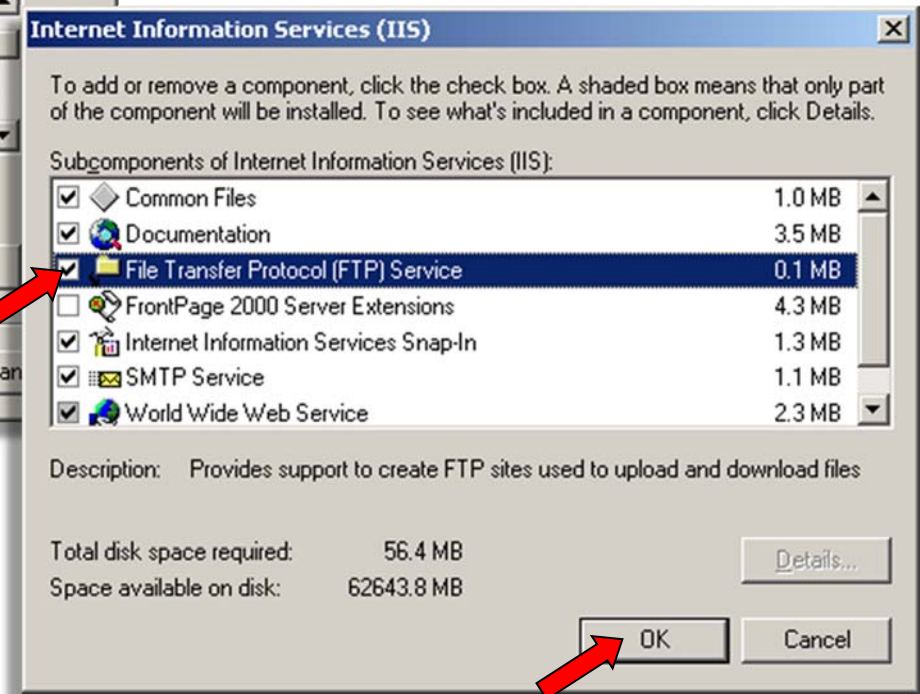
2. Click Add/Remove Windows Components



3. Check the box and double-click Internet Information Services (IIS)

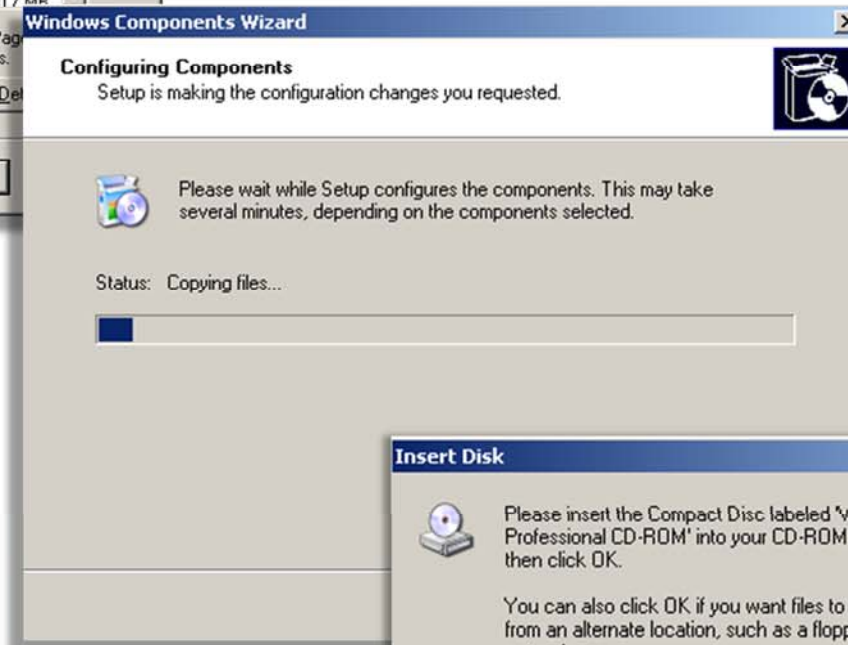
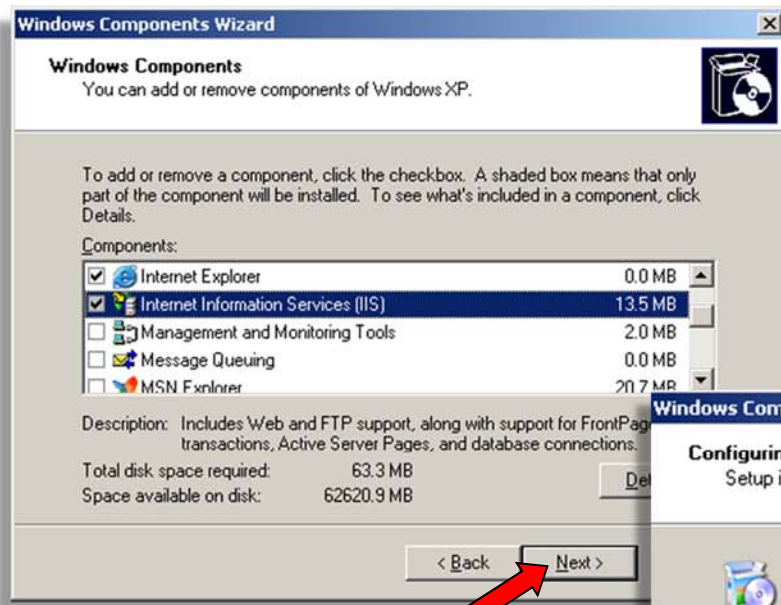


4. Check the File Transfer Protocol (FTP) Service box



Click OK

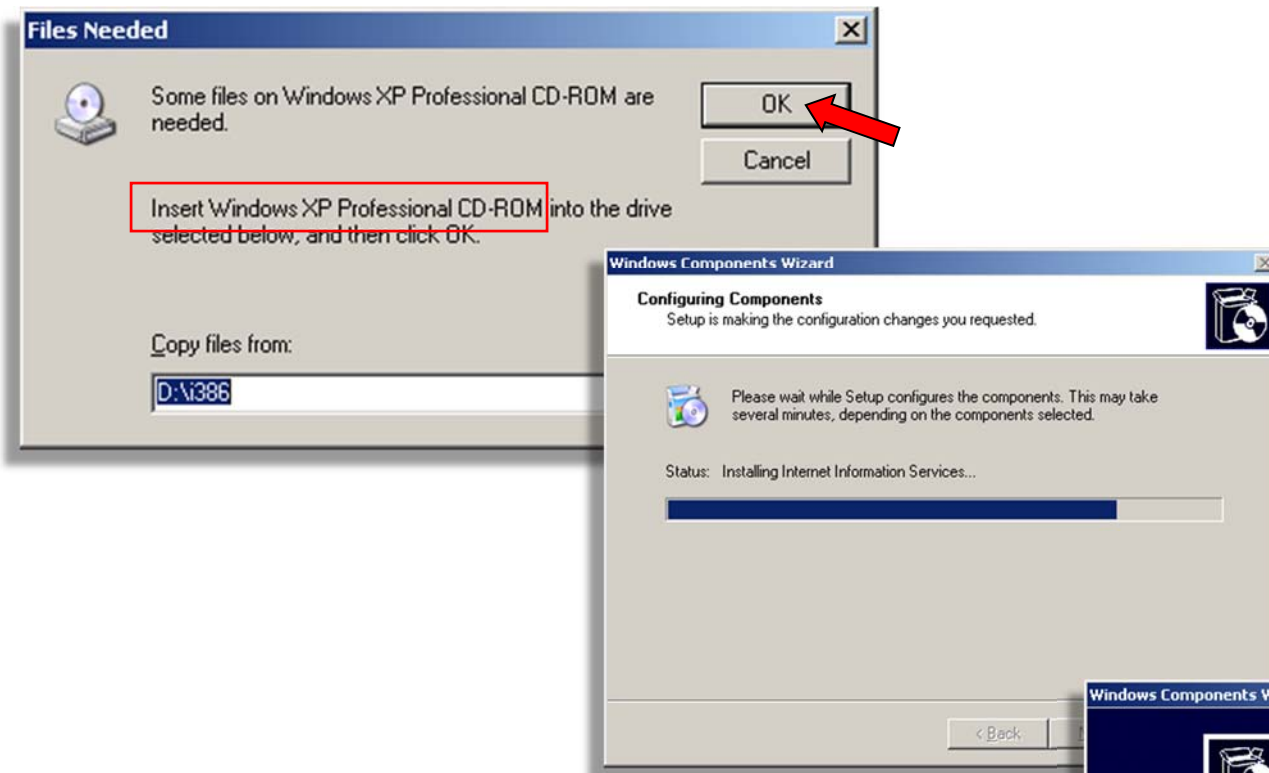
5. Click Next



6. Click OK



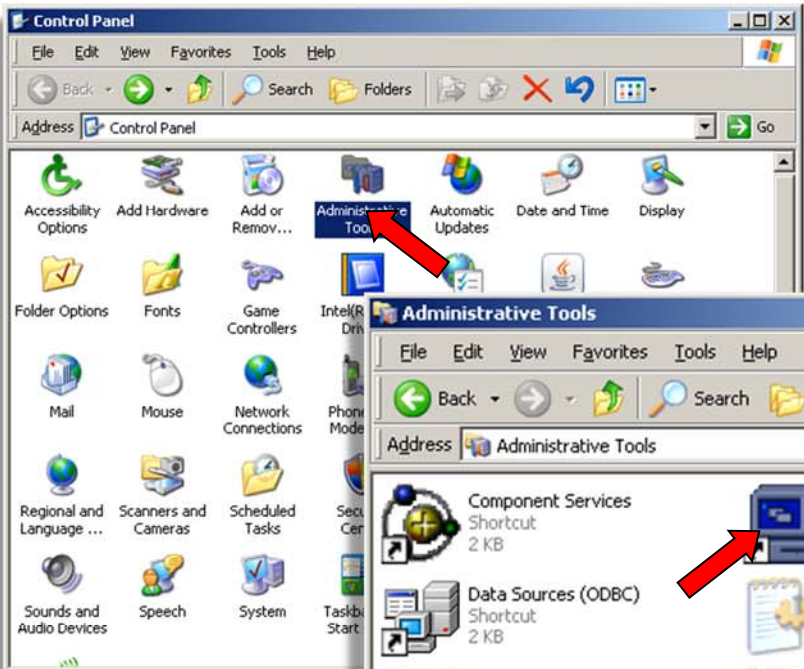
7. If prompted, insert the proper Windows CD-ROM and click OK



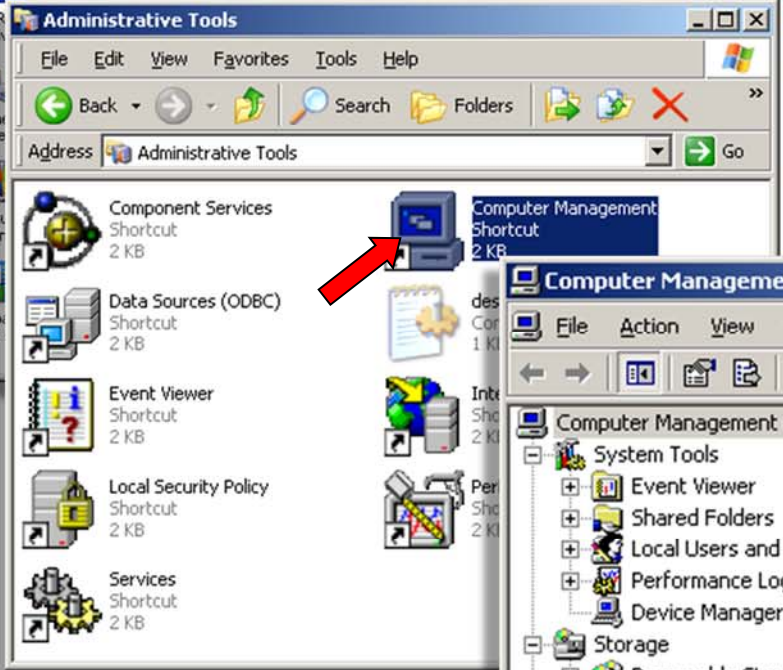
8. Click Finish



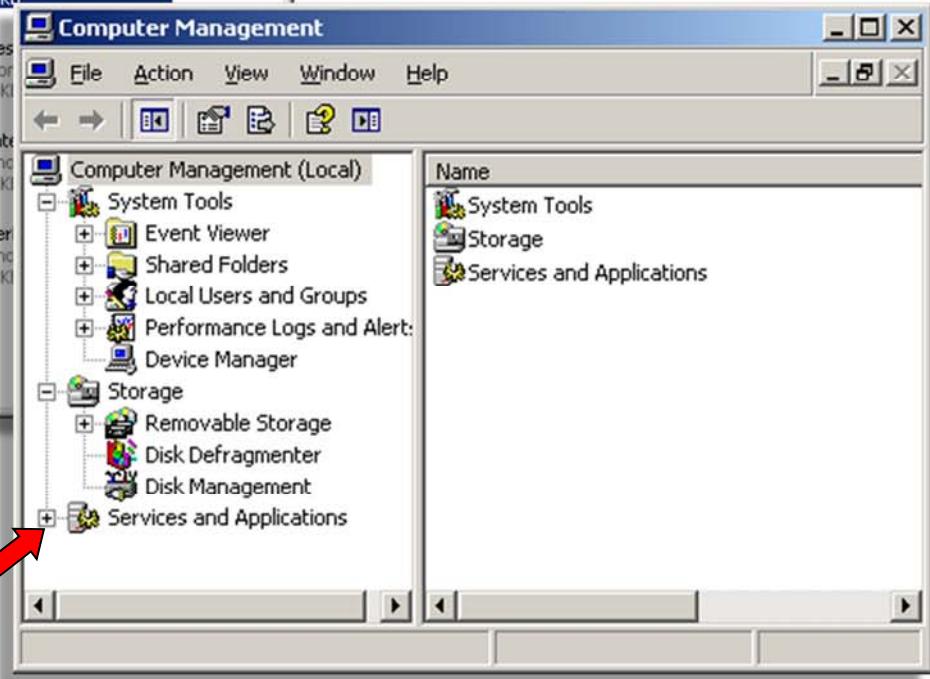
9. In the Control Panel, double-click Administrative Tools



10. Double-click Computer Management

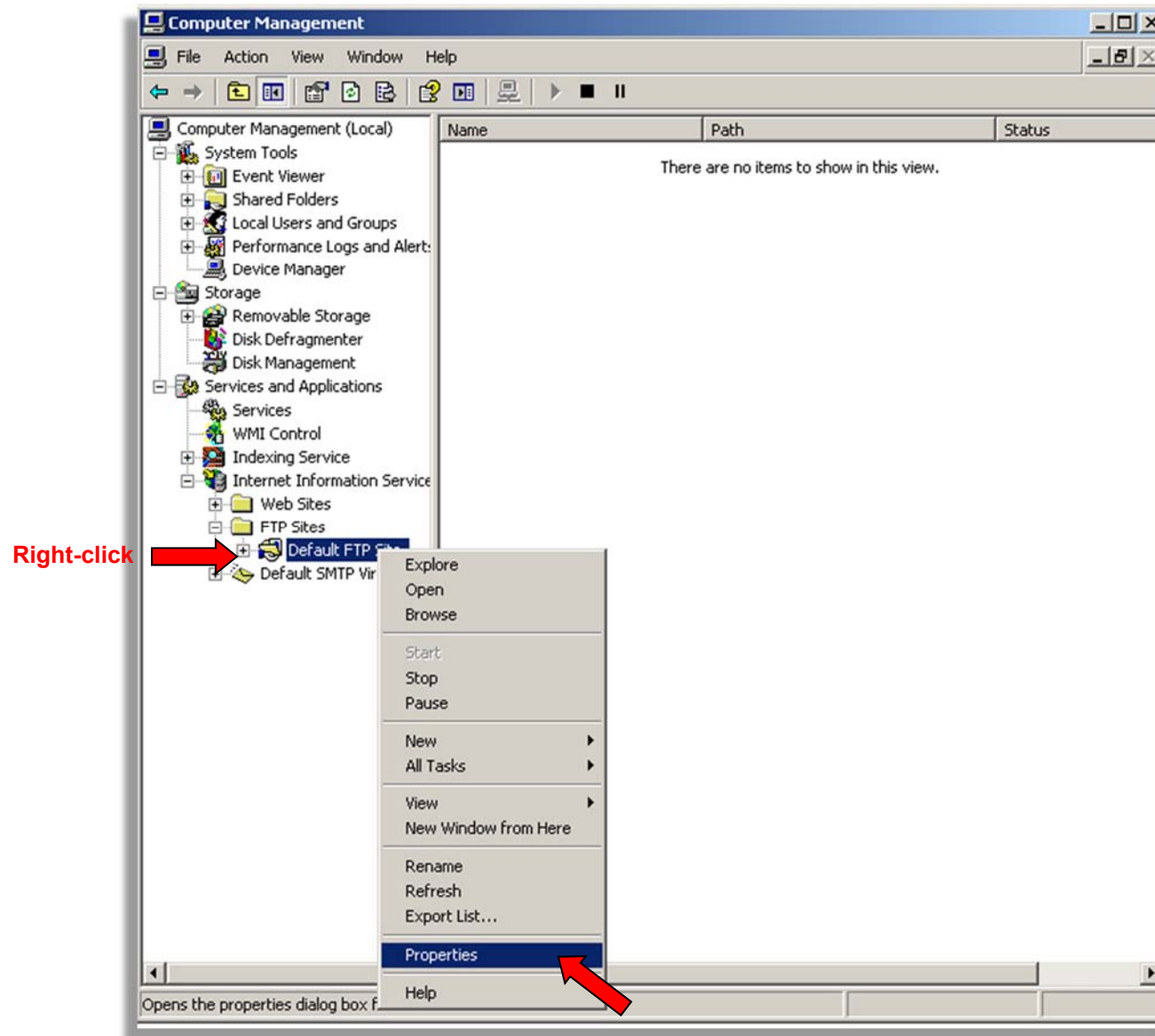


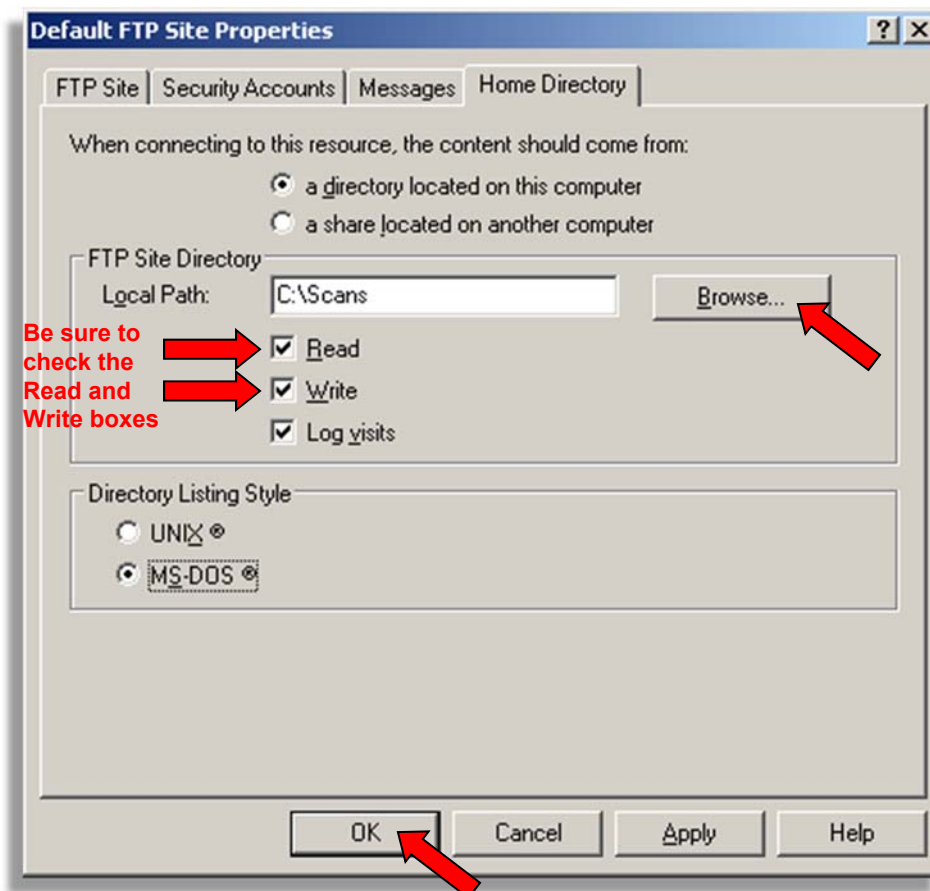
11. Click the + next to Services and Applications



Configuring FTP services (First time setup)

Follow these instructions if you enabled FTP for the first time.





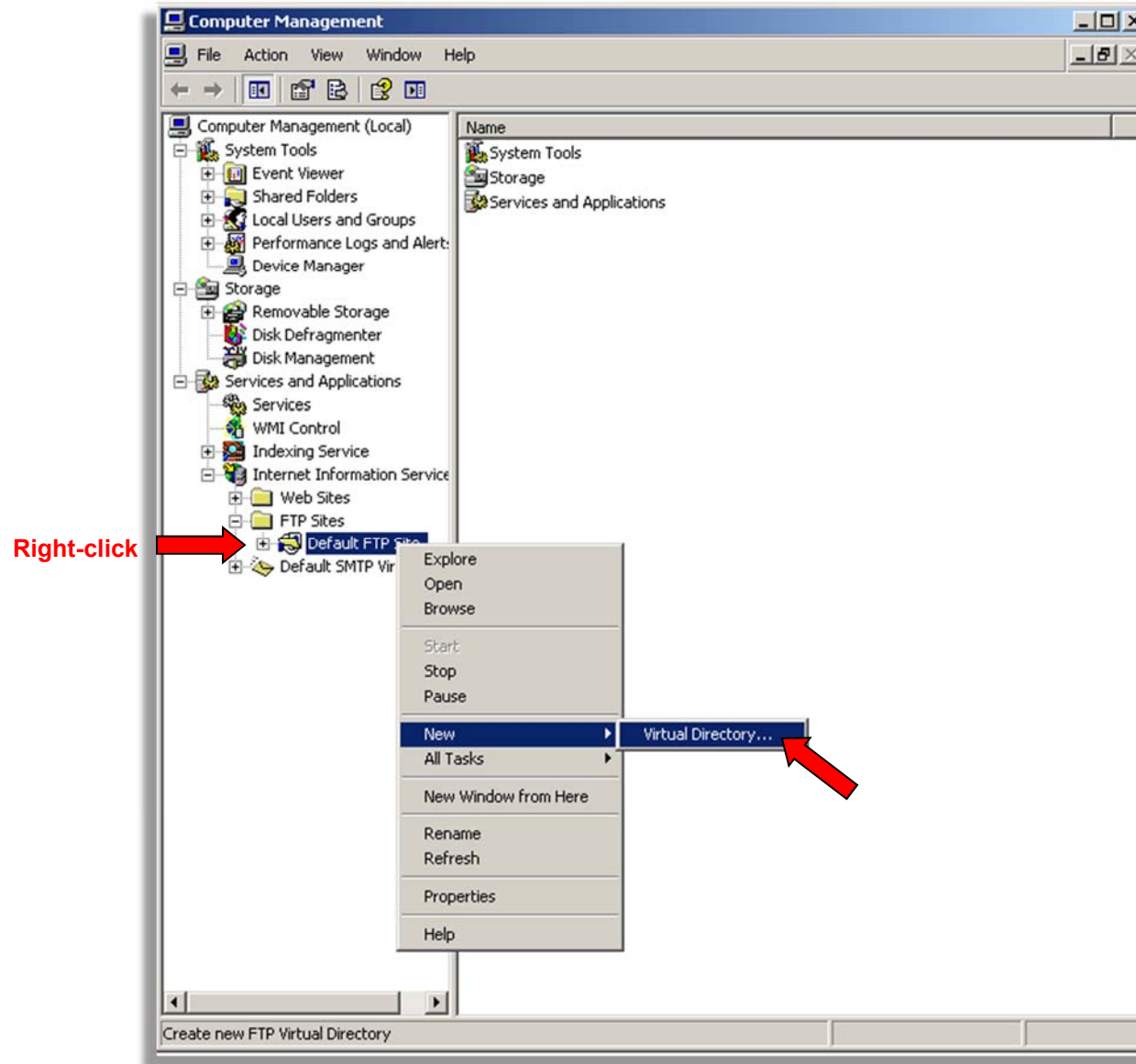
Be sure to check the Read and Write boxes

Click Browse... and point to the desired folder.
Note: This image shows C:\Scans as an example.

Click OK when finished

Creating FTP services Virtual Directory (If default FTP site already exists)

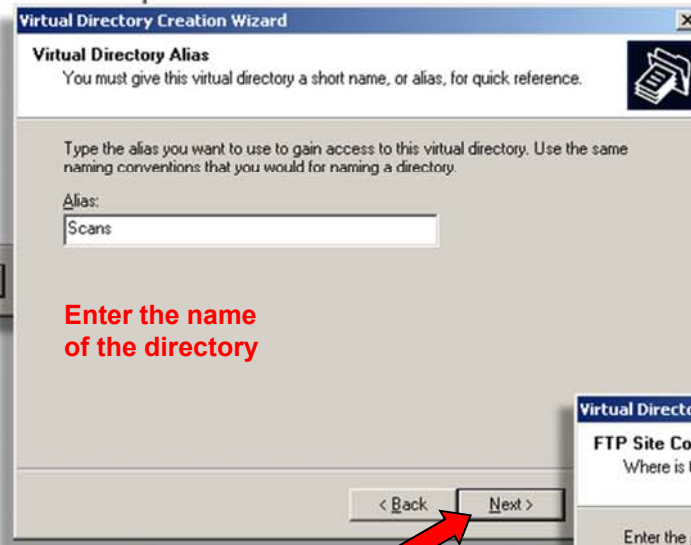
Follow these instructions if you have a Default FTP Site already.



1. Click Next

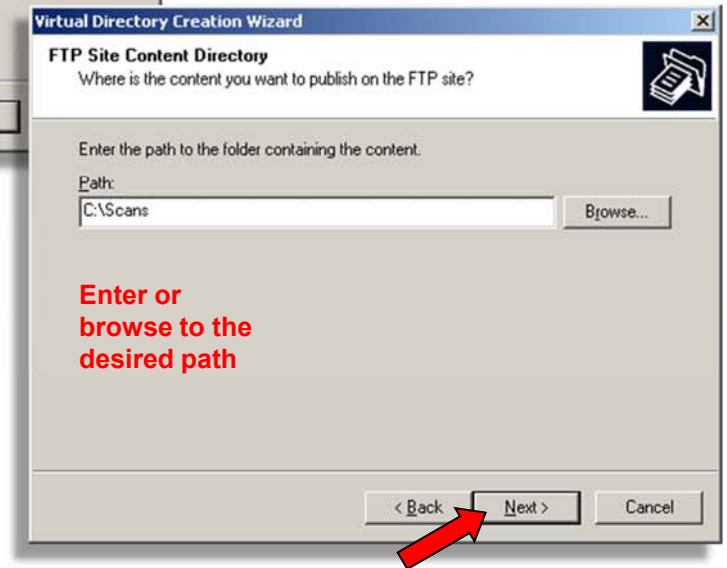


2. Click Next



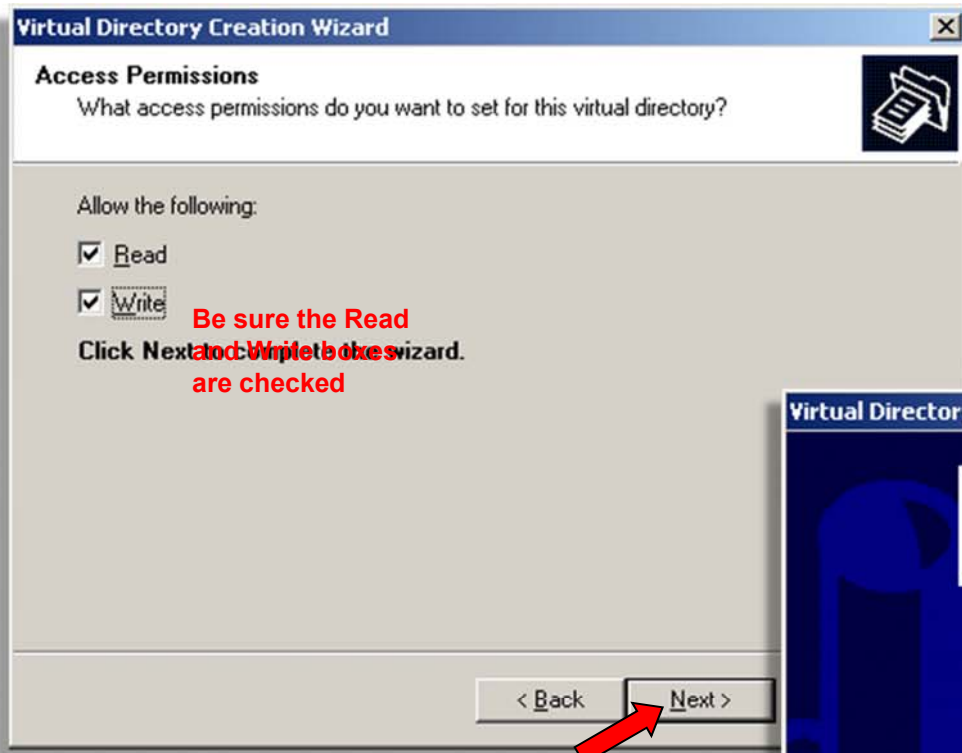
Enter the name of the directory

3. Click Next



Enter or browse to the desired path

4. Check the Read and Write Boxes and click Next



Be sure the Read and Write boxes are checked

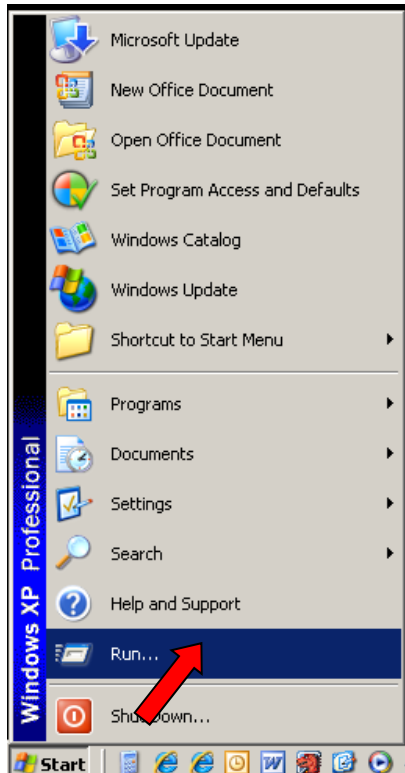
5. Click Finish



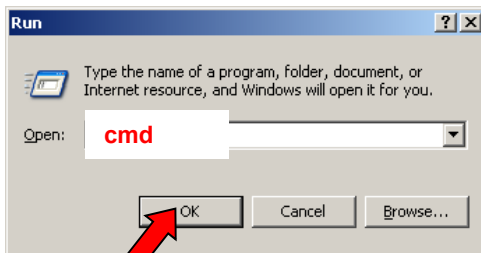
Troubleshooting scan to FTP (CE-04 errors)

Step

1. Click Start > Run

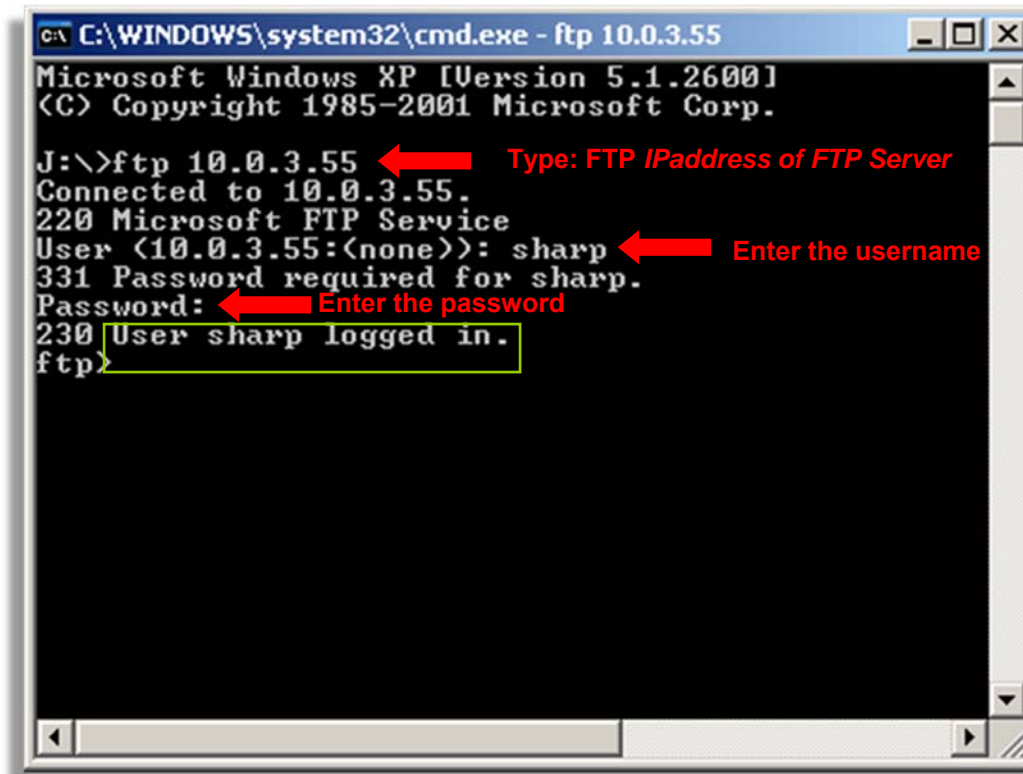


2. Type: cmd and click OK



3. Type: `ftp ipaddress` (IP address of FTP services hosting computer) > Enter
4. Type: `username` > Enter
5. Type: `password` > Enter
6. Type: `bye` > Enter (to exit when finished)

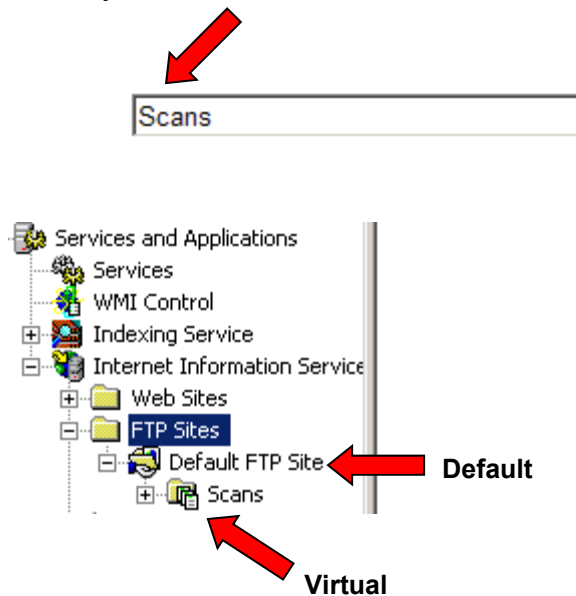
Note: The results should look similar to the screen below. If the results are different, you may have an incorrect username or password and will need to correct that and repeat these steps again until the results are positive.



Troubleshooting scan to FTP (CE-02 & CE-05 errors)

1. Enter the IP address or Hostname (computer name) of the computer that is running the FTP service

2. If the FTP site is the default home directory, **NO** Directory is needed. If it is a virtual directory, be sure to include the directory name **without a slash** in front.



The screenshot shows the AR-M550N web interface. The browser address bar displays 'http://10.0.1.10/'. The page title is 'AR-M550N'. The main content area is titled 'Destination Management' and includes a section for 'FTP Destination Control'. The 'Hostname or IP Address (Required)' field is set to '10.0.3.55' and is highlighted with a red box. The 'Directory (Optional)' field is empty and also highlighted with a red box.

Field	Value
Name (Required)	FTP Scans
Initial (Optional)	
Display Name (Optional)	
Custom Index	USER 1
	<input checked="" type="checkbox"/> Frequently Used
Hostname or IP Address (Required) 1	10.0.3.55
File Format	PDF MMR(G4)
User Name (Optional)	ftpuser
Password (Optional)	*****
Directory (Optional) 2	