

## MFP

### TT-

**TECHNICAL  
TIP**

**Models:** MX-2640N/MX-3140N/MX-3640N

**Priority:** Medium

**Date:** November 2013

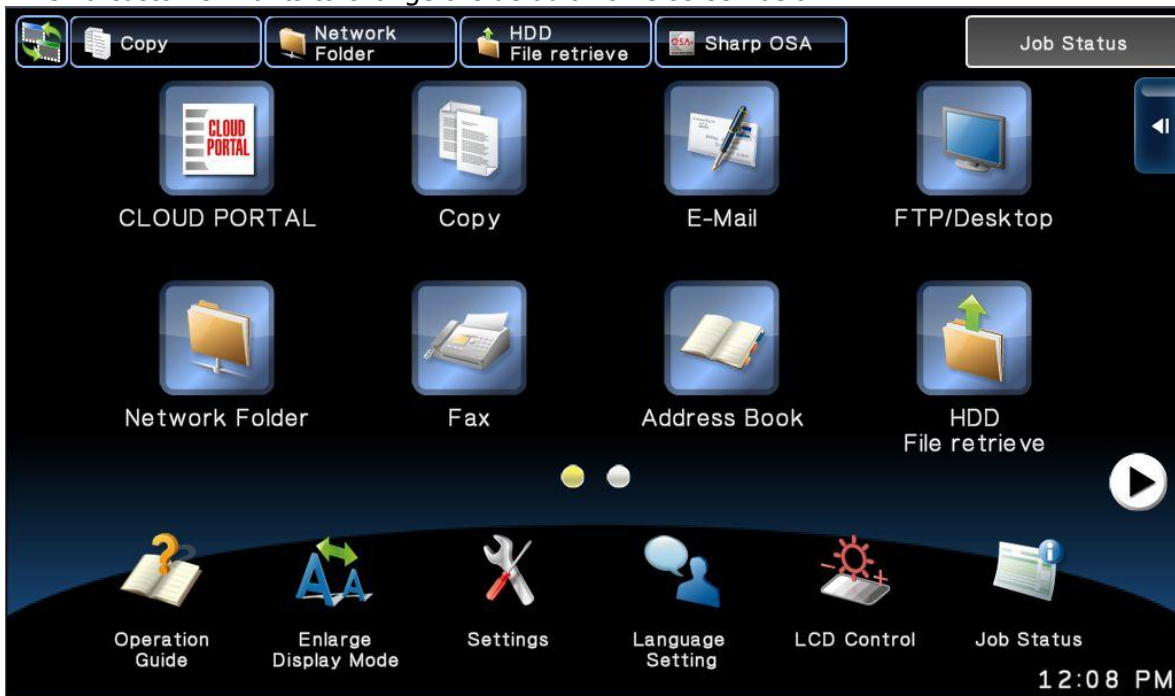
**Subject:** When Customizing Home Screen Icon Names The Names go To Factory Default When User Authentication is Enabled.

**Symptom:** When Customizing Home Screen Icon Names The Names go To Factory Default When User Authentication is Enabled.

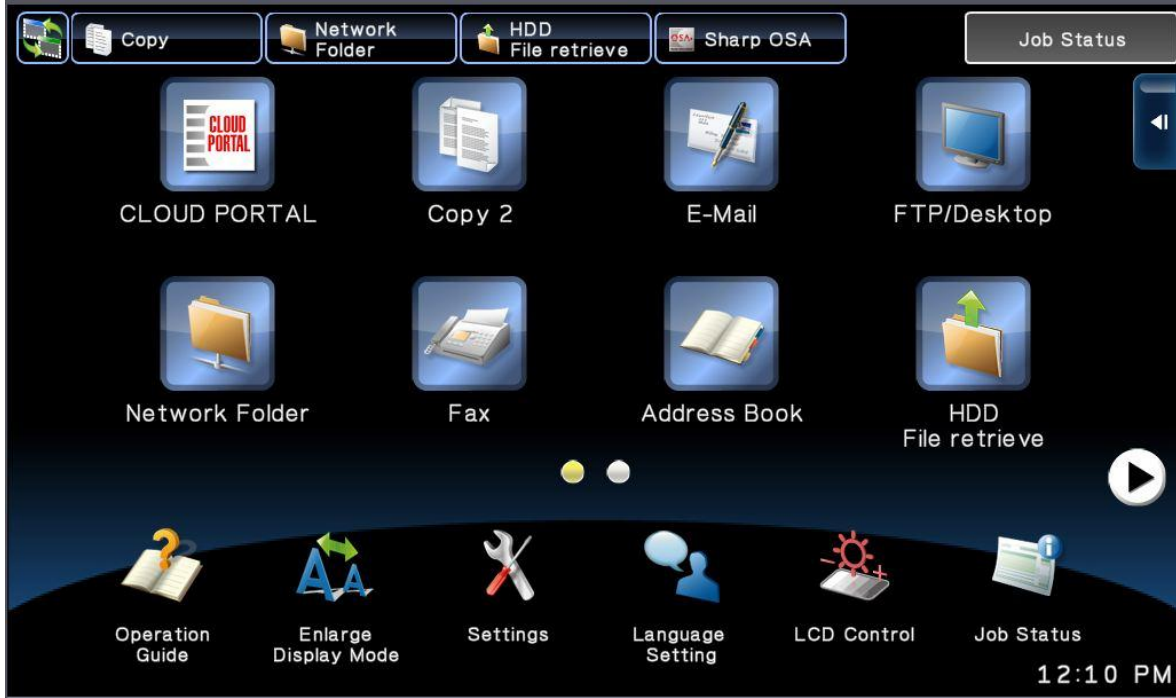
**Cause:** Added functionality to new models for user authentication

**Solution:** See below.

When a customer wants to change the default Home screen below:



To having Icons with custom names like below:



This is normally done in System Settings / Operation Settings / Home Screen settings and chooses a Home Button the customer wants changed.

**SHARP**

**MX-3640N**

### Home Screen Settings

Update(R)

Item	Image
<b>Top Page</b>	
▶ Status	
▶ Address Book	
▶ Document Operations	
▶ User Control	
▼ System Settings	
Total Count	
Default Settings	
List Print (User)	
▶ Paper Tray Settings	
Paper Type Registration	
F-Code Memory Box	
Fax Data Receive/Forward	
Printer Condition Settings	
USB-Device Check	
▼ Operation Settings	
Soft Keyboard Template Setting	
Customize Key Setting	
Mode Key Display Setting	
Home Screen Settings	
Device Control	
Copy Function Settings	
▶ Printer Settings	
▶ Image Send Settings	
▶ Document Filing Settings	

No.	Home Button
1	CLOUD PORTAL
2	Copy
3	E-mail
4	FTP/Desktop
5	Network Folder
6	Fax
7	Address Book
8	File Information
9	Scan to HDD
10	Paper Tray Settings

Previous(M) 1 / 6 Next(N)

No.	Fix Key
1	Operation Guide
2	Enlarge Display Mode
3	System Settings
4	Display Language Setting
5	LCD Control
6	Job Status
7	Not Set
8	Not Set
9	Not Set
10	Not Set

Like in our example of the Copy button, we entered COPY 2 in the custom field.

When the copy button is changed it looks like this in the web page.


No.	Home Button
1	CLOUD PORTAL
2	Copy 2
3	E-mail
4	FTP/Desktop
5	Network Folder
6	Fax
7	Address Book
8	File Information
9	Scan to HDD
10	Paper Tray Settings

No.	Fix Key
1	Operation Guide
2	Enlarge Display Mode
3	System Settings
4	Display Language Setting
5	LCD Control
6	Job Status
7	Not Set
8	Not Set
9	Not Set
10	Not Set

However if you use User authentication the Customized default screen is not used.  
 To get a customized Icon name you must do the following:

- 1- In user control Favorite Operation Group List / Home screen list, select any of the Home Screen choices in the list from 2 through 20. (We chose 2 for the example)



## Home Screen List

- Top Page
- Status
- Address Book
- Document Operations
- User Control**
  - User List
  - Default Settings
  - Organization /Group List
  - Page Limit Group List
  - Machine Page Limit Setting
  - Authority Group List
  - Favorite Operation Group List**
    - Customize Keys List
    - Home Screen List**
  - User Count
  - Card Area Setting
  - Card Type / Card Reader Settings
- System Settings
- Network Settings
- Application Settings
- Energy Save
- E-mail Alert and Status
- Job Log
- Security Settings
- Custom Links
- Operation Manual Download

Default Home Screen:

Home Screen List:

No.	Home Screen Name
<input type="checkbox"/> 1	Home Screen 1
<input type="checkbox"/> 2	<b>Home Screen 2</b>
<input type="checkbox"/> 3	Home Screen 3
<input type="checkbox"/> 4	Home Screen 4
<input type="checkbox"/> 5	Home Screen 5
<input type="checkbox"/> 6	Home Screen 6
<input type="checkbox"/> 7	Home Screen 7
<input type="checkbox"/> 8	Home Screen 8
<input type="checkbox"/> 9	Home Screen 9
<input type="checkbox"/> 10	Home Screen 10
<input type="checkbox"/> 11	Home Screen 11
<input type="checkbox"/> 12	Home Screen 12
<input type="checkbox"/> 13	Home Screen 13
<input type="checkbox"/> 14	Home Screen 14
<input type="checkbox"/> 15	Home Screen 15
<input type="checkbox"/> 16	Home Screen 16
<input type="checkbox"/> 17	Home Screen 17
<input type="checkbox"/> 18	Home Screen 18
<input type="checkbox"/> 19	Home Screen 19
<input type="checkbox"/> 20	Home Screen 20

2- When you select the home screen choice you will see a web page Identical to Default Home Screen settings that you can alter the same way.



### Home Screen Settings

Update(R) Back(Q)

---


- Top Page
- Status
- Address Book
- Document Operations
- User Control
  - User List
  - Default Settings
  - Organization /Group List
  - Page Limit Group List
  - Machine Page Limit Setting
  - Authority Group List
  - Favorite Operation Group List
    - Customize Keys List
    - Home Screen List
  - User Count
  - Card Area Setting
  - Card Type / Card Reader Settings
- System Settings
- Network Settings
- Application Settings
- Energy Save
- E-mail Alert and Status
- Job Log
- Security Settings
- Custom Links

Name:  
Select the Group Name to be the Registration Model:

No.	Home Button
1	CLOUD PORTAL
2	Copy 2
3	Email 2
4	FTP/Desktop
5	Network Folder
6	Fax
7	Address Book
8	File Information
9	Scan to HDD
10	Paper Tray Settings

Previous(M) 1 / 6 Next(N)

No.	Fix Key
1	Operation Guide
2	Enlarge Display Mode
3	System Settings
4	Display Language Setting
5	LCD Control
6	Job Status
7	Not Set
8	Not Set
9	Not Set
10	Not Set



### Home Screen Registration

Submit(U) Cancel(C)

---

- Top Page
- Status
- Address Book
- Document Operations
- User Control
- System Settings
  - Total Count
  - Default Settings
  - List Print (User)
  - Paper Tray Settings
  - Paper Type Registration
  - PC-Data Memory Box
  - Fax Data Receive/Forward
  - Printer Condition Settings
  - USB-Device Check
  - Operation Settings
    - Soft-keyboard Template Setting
    - Customize Key Setting
    - Multi Key Display Setting
    - Home Screen Settings
  - Device Control
  - Copy Function Settings
  - Printer Settings
  - Image Send Settings
  - Document Filing Settings
  - List Print
  - Sharp OSA Settings
  - Energy/Device Settings
  - Data Backup
  - Product Key
  - Strong Calling of System Settings
  - Network Settings
  - Application Settings
  - Energy Save
  - E-mail Alert and Status
  - Job Log
  - Security Settings
  - Custom Links
  - Operation Manual Download

Home Button No. 2: Copy

Copy:  None  Copier  Program List

Image Send:  Program  Mode Key  Program List  Program  Address Book  Address Control  Contacts/Group Address

File Information:  Mode Key  My Folder  Eaton Print  Sharp OSA  Application  Web Browse  Job Status  System Settings  Total Count  Paper Tray Settings  Display Language Setting  Custom Folder Registration  Language  Enlarge Display Mode  Operation Guide  LCD Control  Received Data List  Internal Fax Manual Reception  Forward Setting of Received Data (Error Box)

Web Browse:  Default  Custom Copy 4 (Up to 28 characters)

System:  Default  Custom Copy 4 (Up to 28 characters)

Key Name: \_\_\_\_\_

- 3- Next you go to Favorite Operation Group List / add and give a name of the group being used in User Authentication.

- 4- When you are setting up the group list go to the System settings tab and you must set Home Screen Settings: to the home screen you altered in steps 1 and 2 (Home Screen 2 in our example) and press submit.

5- Then go to User List/Select the user name. (Angel in our example)

**SHARP MX-3640N**

**User List**

Update(R)

Default User List

**User Name**

Administrator

System Administrator

User

Device Account

Other User

User List

Index: All Users

Display Items: 10

User Name	No.
Angel	3

6- Within the User registration Screen, set the Favorite Operation Group: to the Group you programmed in steps 3 and 4 (Test in our example) Note: if set to Following the system settings, the machine will be following Factory defaults.

**SHARP MX-3640N**

**User Registration**

Submit(U) Cancel(C)

User Name (Required): Angel

Apply User Name to Log-in Name:

Initial (Optional): Angel

Index (Required): User 1

Login Name: \*\*\*\*\*

Password: .....

Password (confirmation): .....

Change Password:

E-mail Address: \_\_\_\_\_

Home Directory Path: \_\_\_\_\_

Use Login Name And Password for User Authentication:

User Name: \_\_\_\_\_

Password: .....

Authentication Settings:

Change Password:

Login Locally:

Network Authentication:

Authentication Server: gotham1

Organization/Group:

1:	None
2:	None
3:	None
4:	None
5:	None
6:	None
7:	None
8:	None

Pages Limit Group: Unlimited

Authority Group: User

Favorite Operation Group: Test

7- Repeat Step 6 for all users in the address book.