

Print Envelopes Using the Bypass Tray MX and DX “N” Models

(Models Excluded: MX-M850/950/1100, MX-M550/620/700, MX-M753N)

- 1. Print a single or multi page document from default tray & addressed envelopePage 1
- 2. Print a multi-page document from a specified tray & addressed envelopedPage 8
- 3. Print an individual envelope or multiple envelopes only.....Page 15
- 4. Envelope printing for MX-M350 & MX-M450 (Bypass & Tray “2”).....Page 20

1. Print a single or multi-page document from default tray & addressed envelope

When printing an envelope, a single blank page will automatically print if you open a new Microsoft® Word document. You can key text such as a letter, note, memo etc on the single page to include in your envelope.

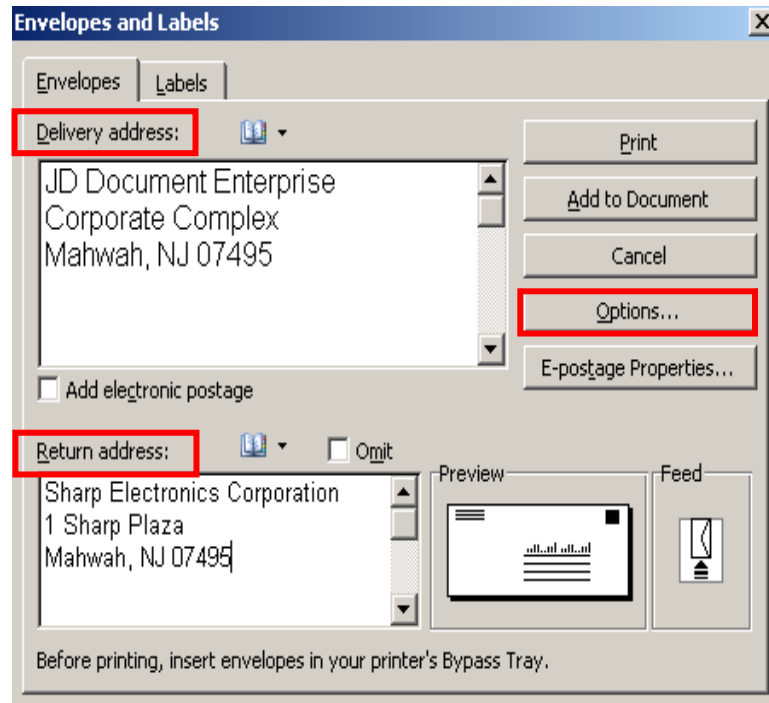
You also have the option to print an envelope with a one page or multi-page document with no blank page.

At the PC:

- 1. **Open:** **New Microsoft Word Document** and key text or **open a multi-page document**.
- 2. **Select:** **Tools** from the header bar.
- 3. **Click:** **Letters and Mailings** from the menu.
- 4. **Choose:** **Envelopes and Labels**.
- 5. **Select:** **Envelope** tab.
- 6. **Type:** **Delivery address** for the recipient in the Delivery address box.
- 7. **Type:** **Return address** for the sender in the Return address box.

Continued on Next Page

8. **Click:** Options button.

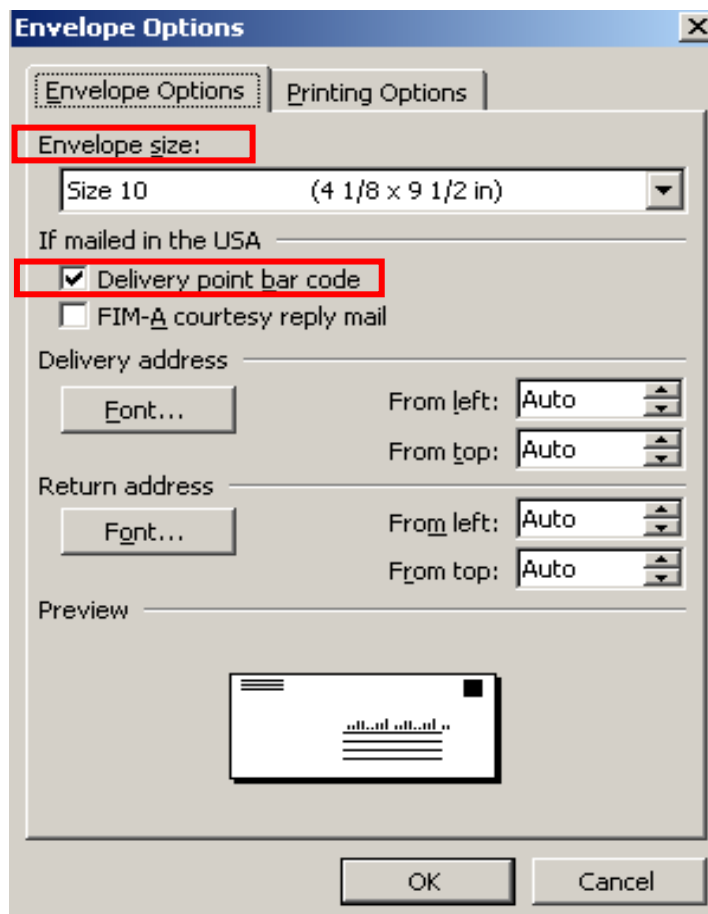


9. **Click:** Envelope Options tab.

Continued on Next Page

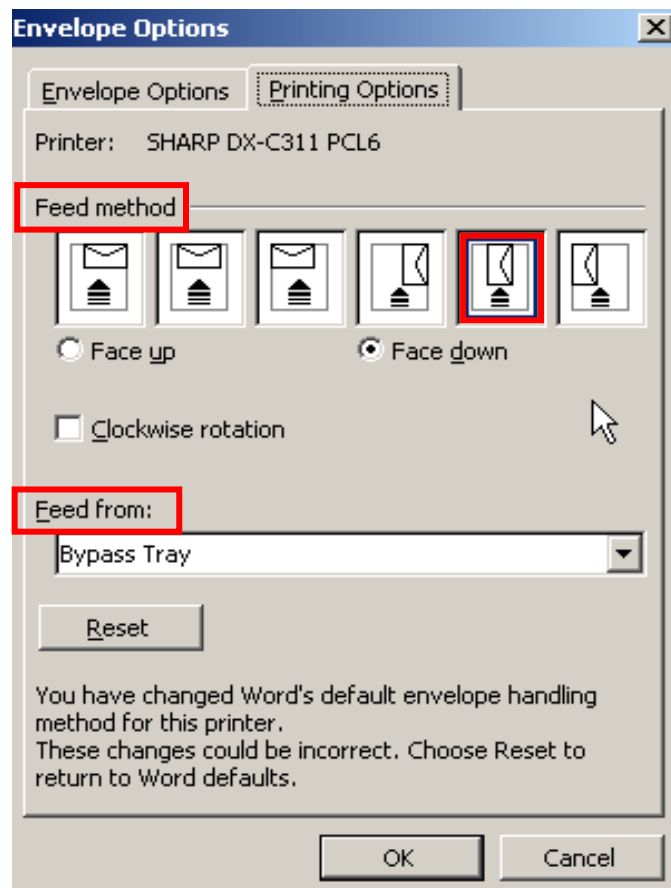
10. **Select:** Size 10 or COM 10 from the Envelope Size drop-down.
11. **Click:** Delivery point bar code box under If mailed in the USA.

***You can change the font attributes for the Delivery address and the Return address by clicking the appropriate Font button.**



Continued on Next Page

12. **Select:** **Printing Options** button.
13. **Click:** **Face down** radio button from Feed Method.
14. **Click:** **2nd to last icon** representing envelope image face-down in the center of the box.
15. **Select:** **Bypass tray** from the Feed from drop-down.

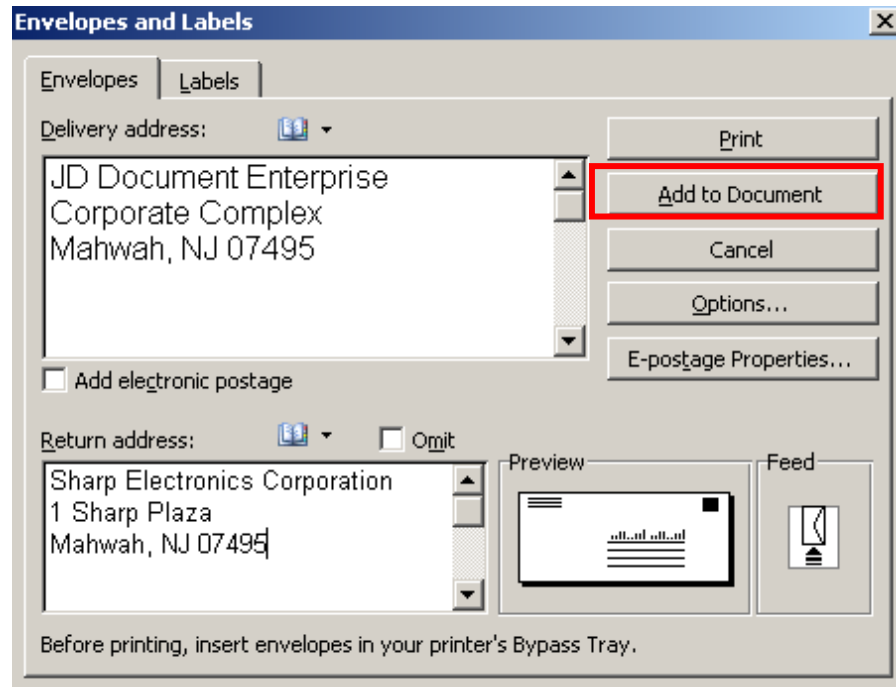


16. **Click:** **OK** button.

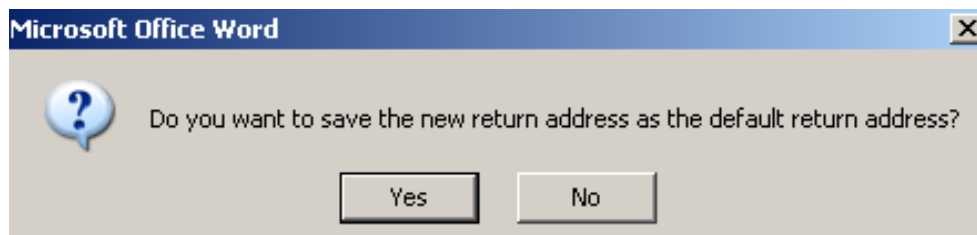
Continued on Next Page

4 OF 27

17. **Click:** **Add to Document** in the Envelopes and Labels dialogue window.

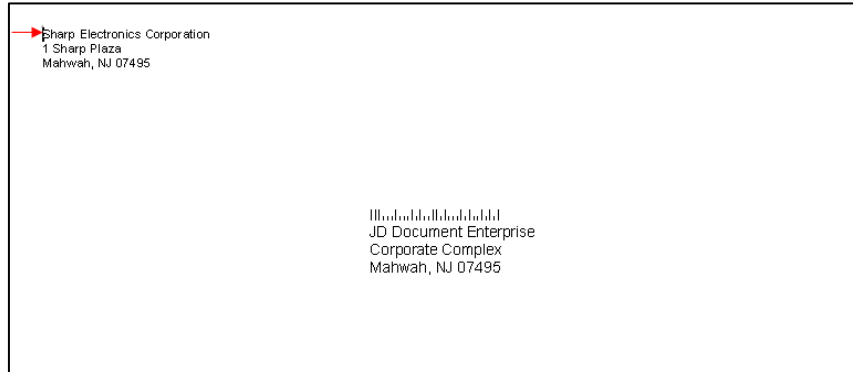


18. **Click:** **NO** when the pop-up message appears.

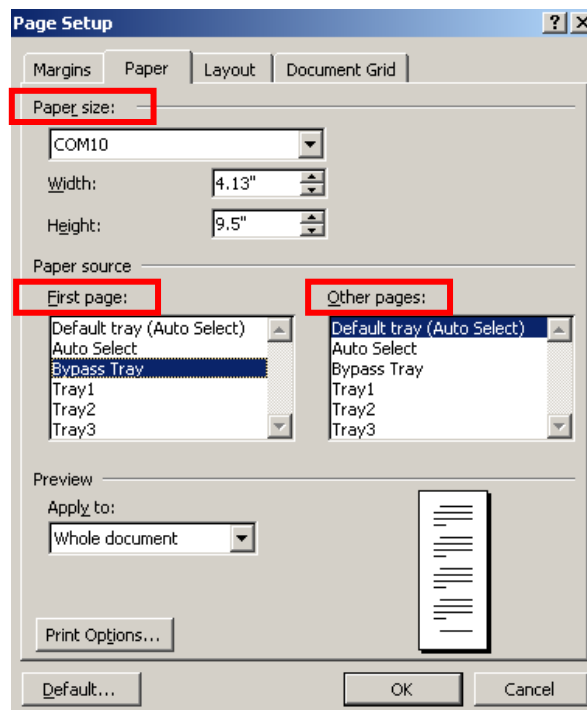


Continued on Next Page

19. **Place:** **Cursor** on the return address on the envelope so that it is blinking.



20. **Click:** **File** and then **Page Setup** from the File menu.
21. **Select:** **Paper** tab.
22. **Select:** **COM 10 or Size 10** under the Paper size drop-down list.
23. **Select:** **Bypass tray** from the drop-down list under first page.
24. **Check:** **Default tray** is highlighted in the Other pages drop-down box.



Continued on Next Page



25. **Click:** OK.
21. **Click:** File.
22. **Select:** Print.
23. **Select:** Sharp printer you will use to print.
24. **Click:** OK after completing the Bypass tray Paper Select setup on the MFP.

At the MFP:

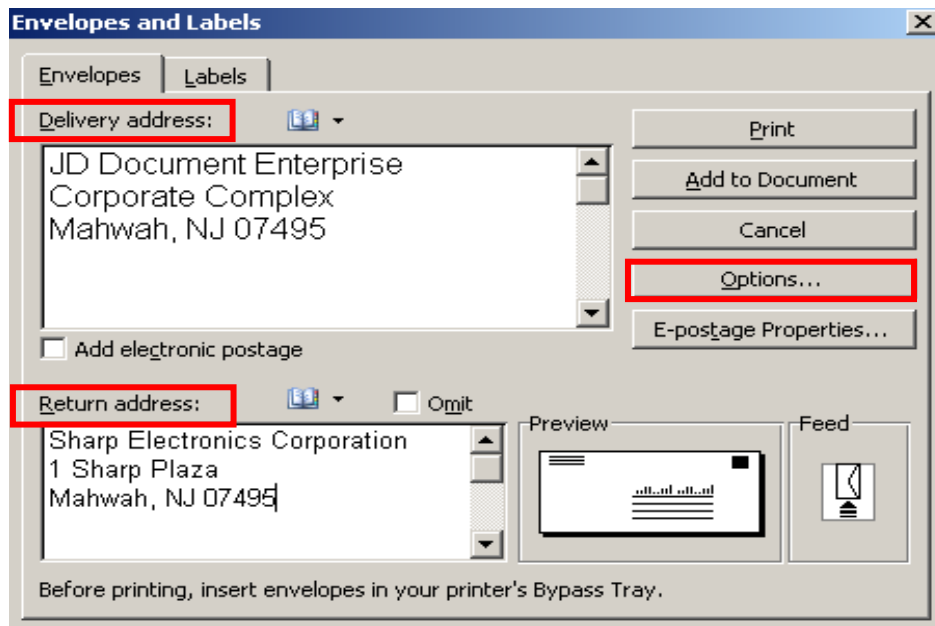
1. **Add:** Envelope facing in the designated position in the Bypass tray.
2. **Touch:** Paper Select on the LCD panel.
3. **Touch:** The **paper type** in the button under Bypass.
4. **Touch:** Envelope.
5. **Touch:** COM-10.
6. **Touch:** OK twice. The Bypass is now set up for Envelopes.
7. **Return:** Paper Select option to original setup after printing is completed.

2. Print a multi-page document from a specified tray & addressed envelope

You can print a multi-page document and print the first page from a specified tray. (E.g. colored paper, cover page, letterhead etc.).

At the PC:

1. **Open:** Multi-page Microsoft Word Document.
2. **Select:** Tools from the header bar.
3. **Click:** Letters and Mailings from the menu.
4. **Choose:** Envelopes and Labels.
5. **Select:** Envelope tab.
6. **Type:** Delivery address for the recipient in the Delivery address box.
7. **Type:** Return address for the sender in the Return address box.
8. **Click:** Options button.

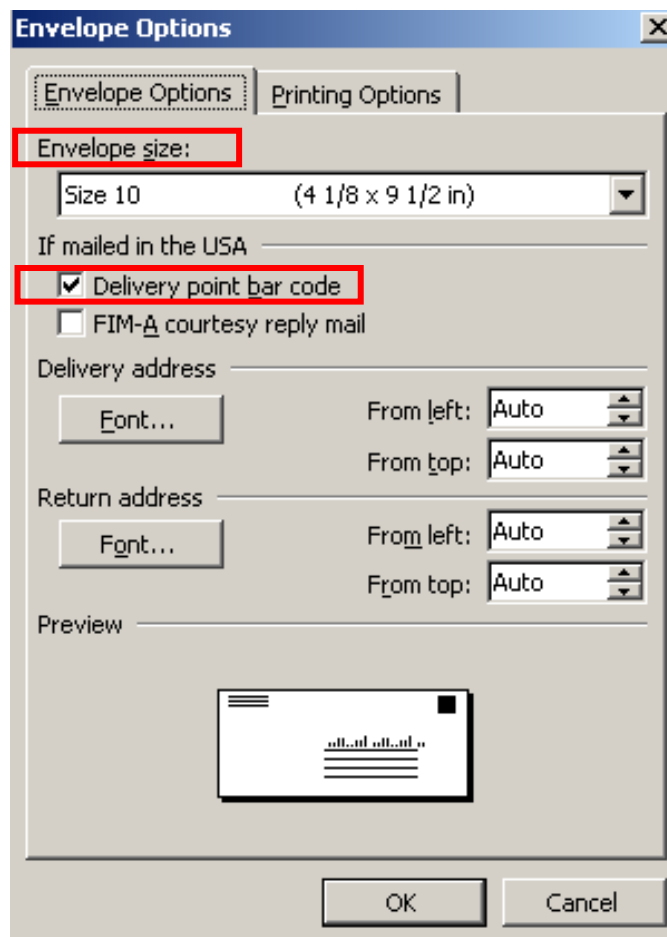


Continued on Next Page

8 OF 27

9. **Click:** Envelope Options tab.
10. **Select:** Size 10 or COM 10 from the Envelope Size drop-down.
11. **Click:** Delivery point bar code box under If mailed in the USA.

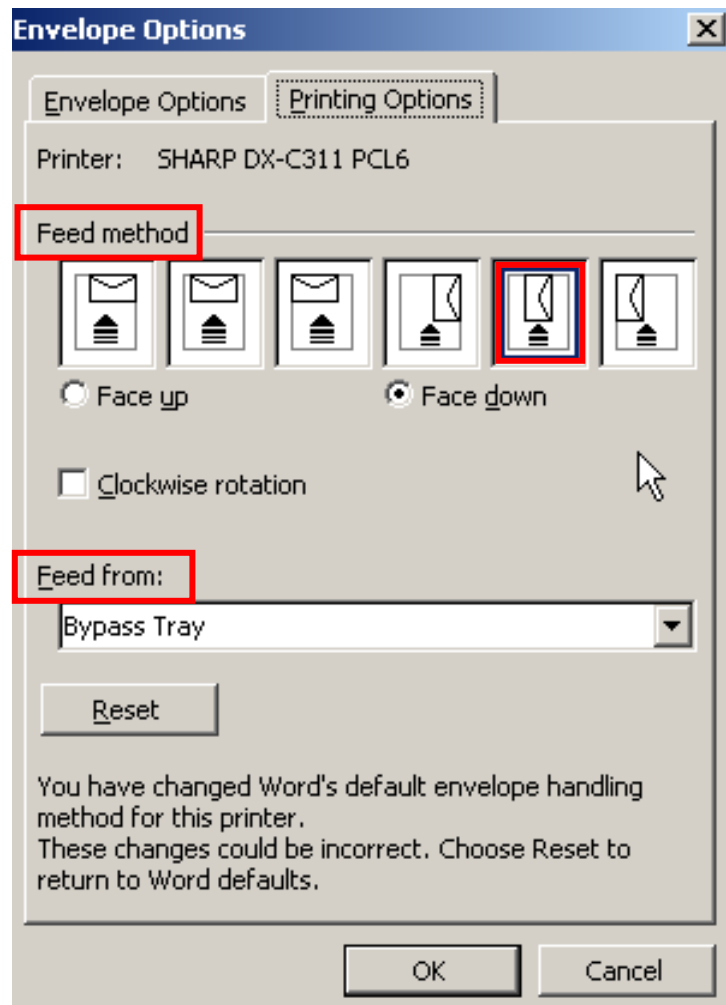
***You can change the font attributes for the Delivery address and the Return address by clicking the appropriate Font button.**



12. **Select:** Printing Options button.

Continued on Next Page

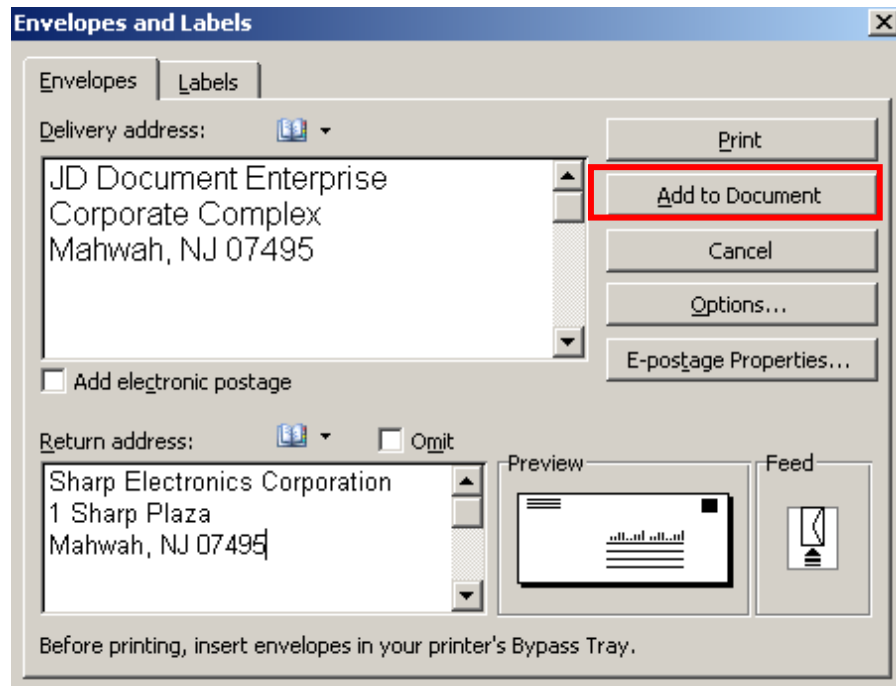
13. **Click:** **Face down** radio button from Feed Method.
14. **Click:** **2nd to last icon** representing envelope image face-down in the center of the box.
15. **Select:** **Bypass tray** from the Feed from drop-down.



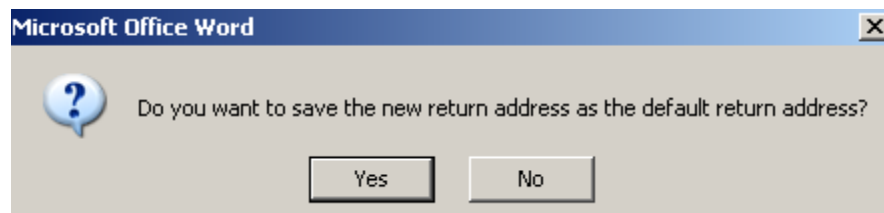
16. **Click:** **OK** button.

Continued on Next Page

17. **Click:** **Add to Document** in the Envelopes and Labels dialogue window.



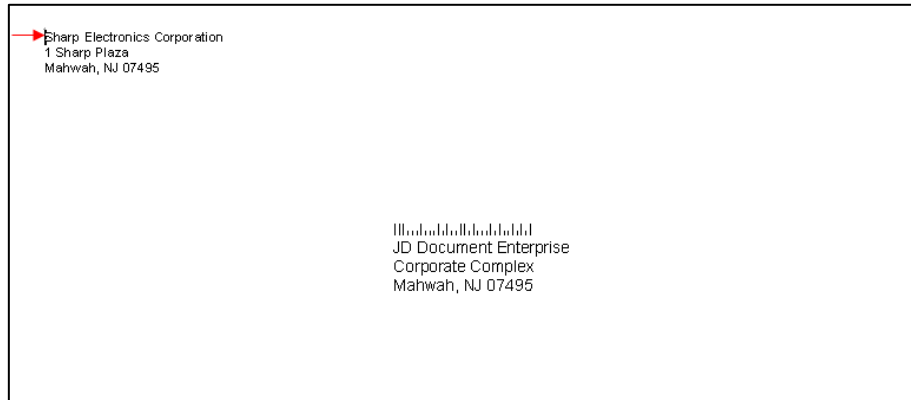
18. **Click:** **NO** when the pop-up message appears.



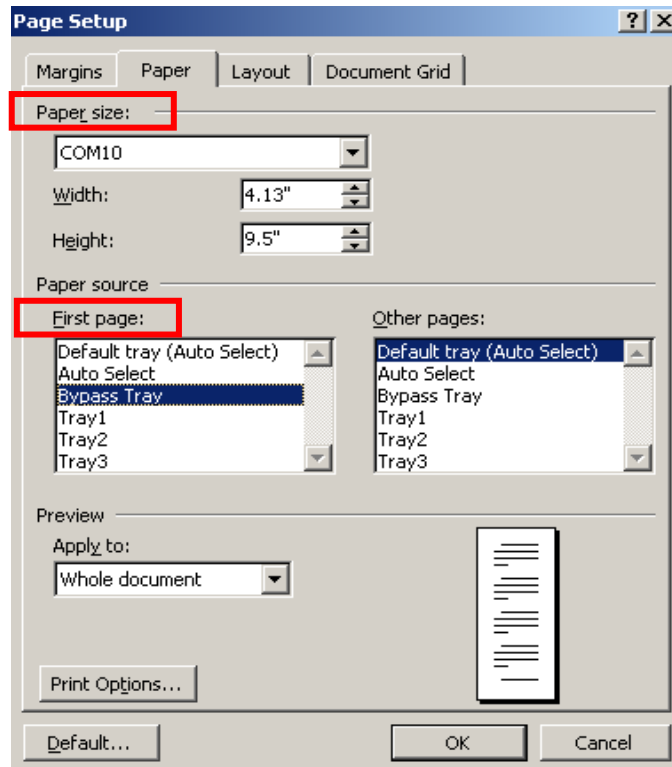
19. **Place:** **Cursor** on the return address on the envelope so that it is blinking.

Continued on Next Page

JD Document Enterprise
Corporate Complex
Mahwah, NJ 07495



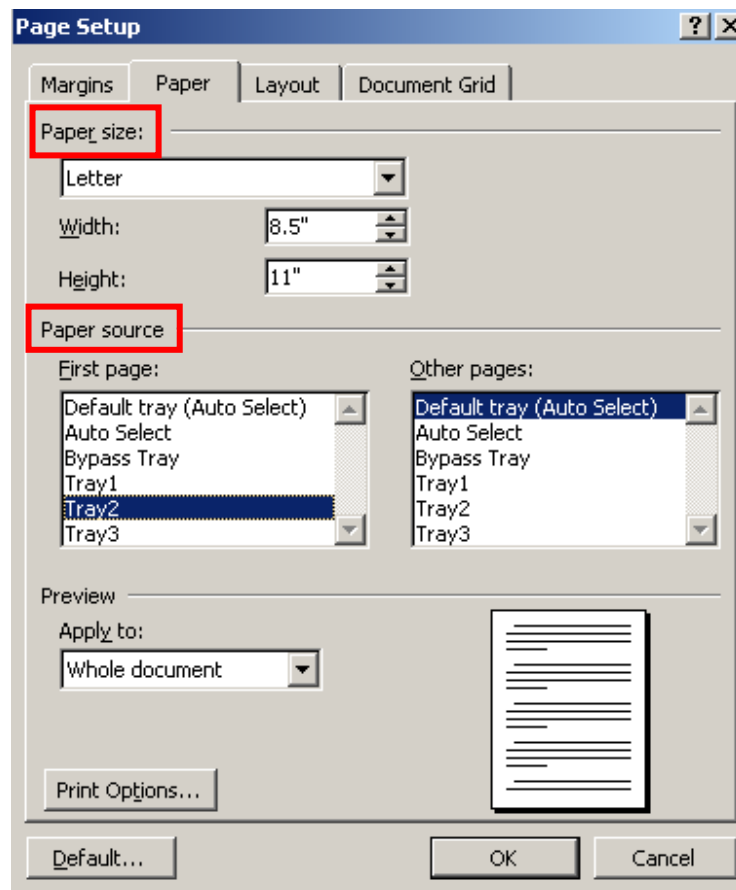
20. **Click:** **File** and then **Page Setup** from the File menu.
21. **Select:** **Paper** tab.
22. **Select:** **COM 10 or Size 10** under Paper size drop-down list.
23. **Select:** **Bypass tray** from the drop-down list under first page.



24. **Click:** **OK**.

Continued on Next Page

25. **Move:** **Cursor** so that it is blinking on the text of the first page of the document.
26. **Click:** **File**.
27. **Select:** **Page Setup**.
28. **Select:** **Letter** from the Paper size drop-down.
29. **Select:** **Tray 2 or another tray**. This selection will print using paper (E.g. colored paper) from the tray selected. If you want all remaining pages to print from this tray, select the same tray under Other pages; otherwise leave the setting for Other pages as Default.
30. **Click:** **OK**.



Continued on Next Page

31. **Click:** File.
32. **Select:** Print.
33. **Select:** Sharp printer you will use to print.
34. **Click:** OK after completing the Bypass tray Paper Select setup on the MFP.

At the MFP:

1. **Add:** Envelope in the designated position to the Bypass tray and check that the specified tray has the appropriate paper for printing the first page..
2. **Touch:** Paper Select on the LCD panel.
3. **Touch:** The **paper type** in the button under Bypass.
4. **Touch:** Envelope.
5. **Touch:** COM-10.
6. **Touch:** OK twice. The Bypass is now set up for Envelopes.
7. **Return:** Paper Select option to original setup after printing is completed.

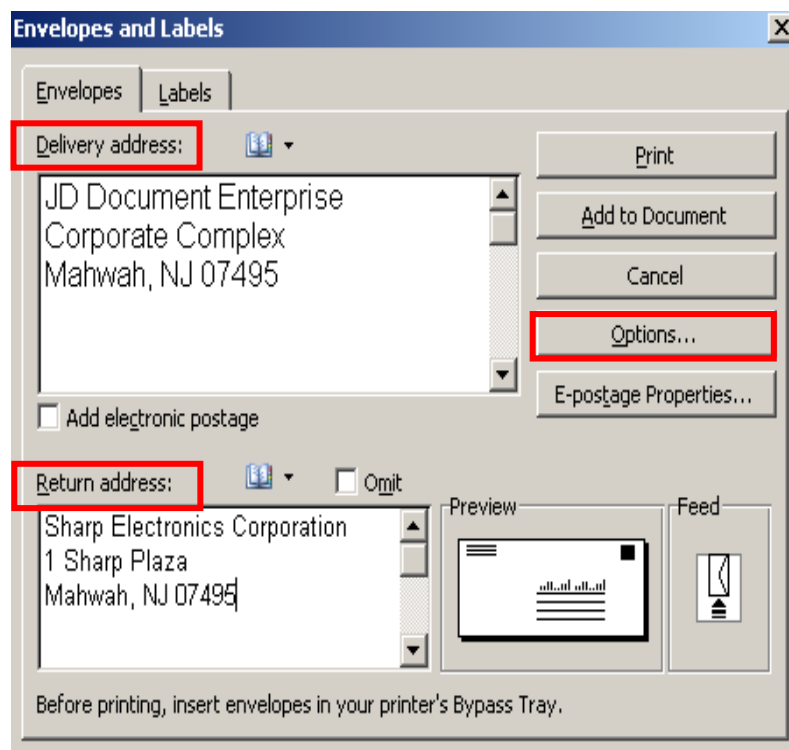
3. Print a single envelope or multiple envelopes only

You can print a single addressed envelope or multiple envelopes with the same address only.

Printing multiple envelopes saves time when you have to use an envelope for mailing to the same address over a period of time.

At the PC:

1. **Open:** **New Microsoft Word Document.**
2. **Select:** **Tools** from the header bar.
3. **Click:** **Letters and Mailings** from the menu.
4. **Choose:** **Envelopes and Labels.**
5. **Select:** **Envelope** tab.
6. **Type:** **Delivery address** for the recipient in the Delivery address box.
7. **Type:** **Return address** for the sender in the Return address box.

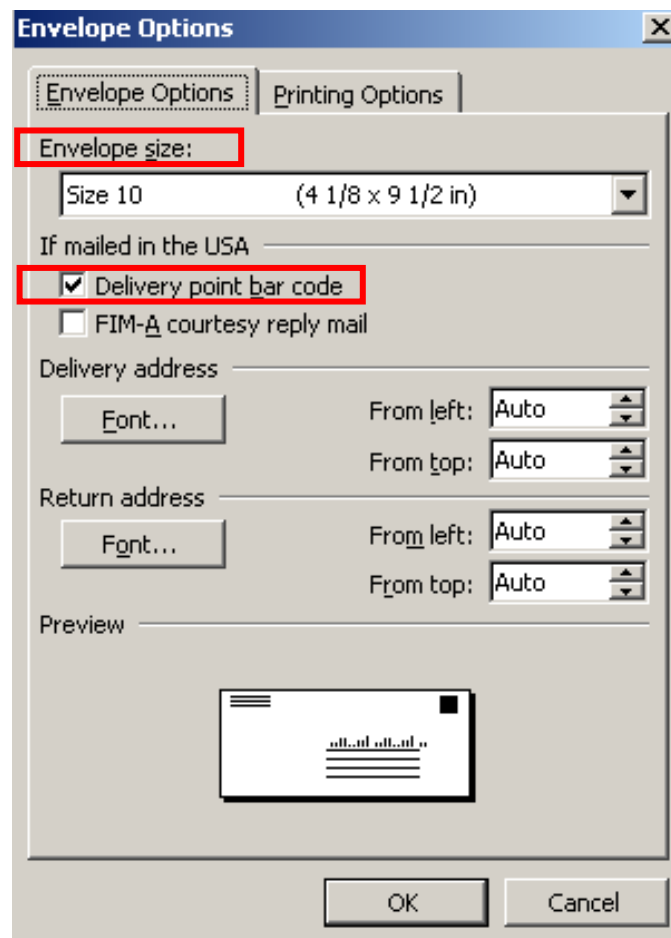


Continued on Next Page

15 OF 27

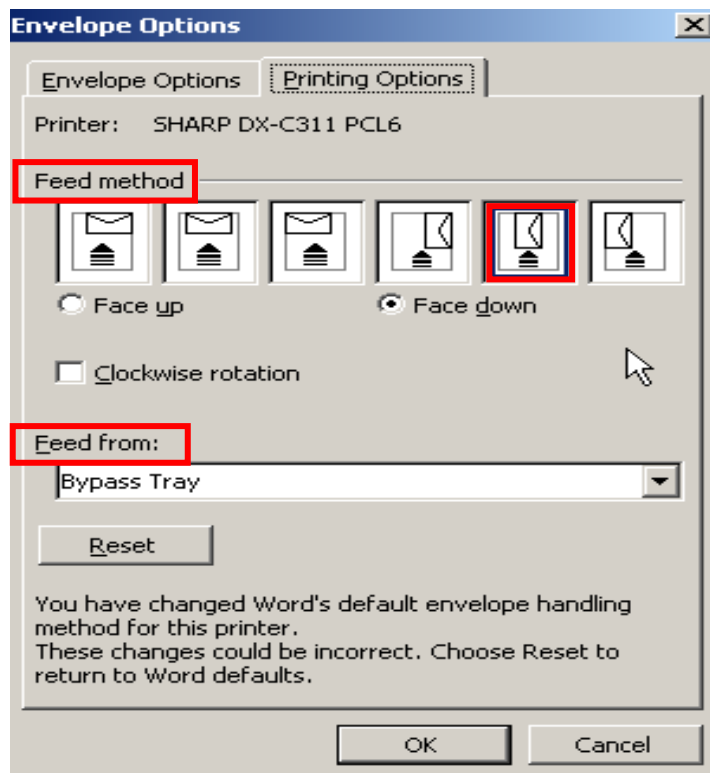
8. **Click:** Options button.
9. **Click:** Envelope Options tab.
10. **Select:** Size 10 or COM 10 from the Envelope Size drop-down.
11. **Click:** Delivery point bar code box under If mailed in the USA.

***You can change the font attributes for the Delivery address and the Return address by clicking the appropriate Font button.**



Continued on Next Page

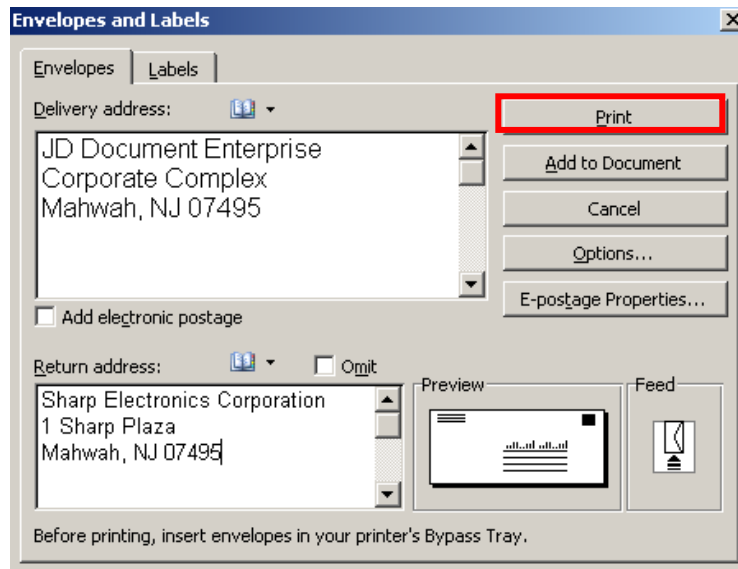
12. **Select:** **Printing Options** button.
13. **Click:** **Face down** radio button from Feed Method.
14. **Click:** **2nd to last icon** representing envelope image face-down in the center of the box.
15. **Select:** **Bypass tray** from the Feed from drop-down.



16. **Click:** **OK** button.

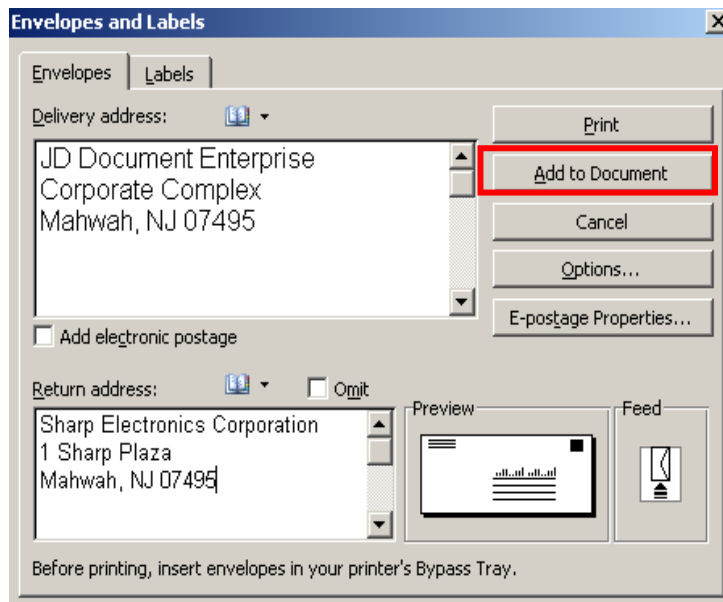
Continued on Next Page

17. **Click:** The **Print** button to print just **one envelope**. The envelope will automatically print.



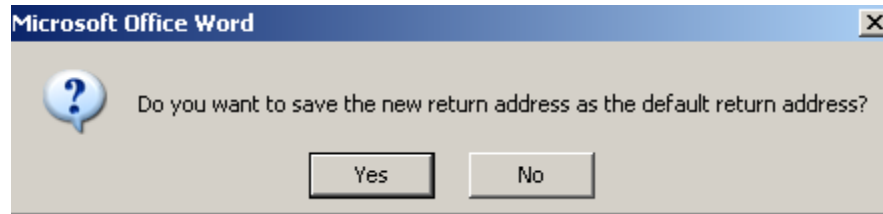
OR

18. **Click:** **Add to Document** in the Envelopes and Labels dialogue window to setup printing **multiple envelopes** with the same address.

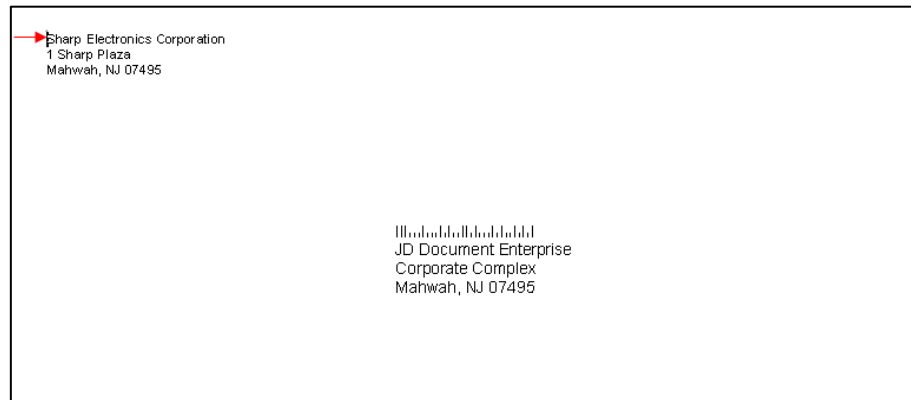


Continued on Next Page

19. **Click:** **NO** when the pop-up message appears.



20. **Place:** **Cursor** on the return address on the envelope so that it is blinking.



21. **Click:** **File**.

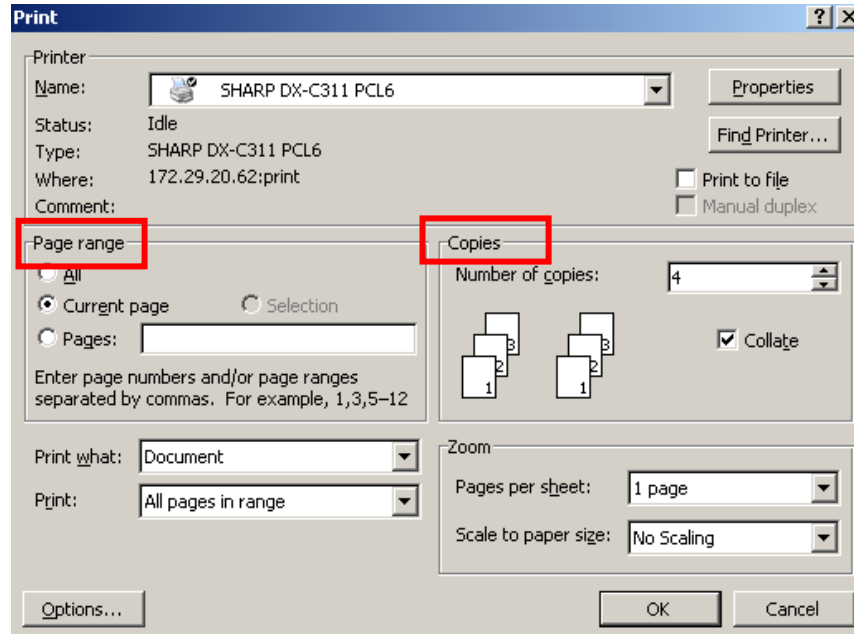
22. **Select:** **Print**.

23. **Select:** **Sharp printer** you will use to print.

Continued on Next Page

19 OF 27

24. **Select:** **Current Page** under Page Range.
25. **Select:** The **Number** of copies you want to print under Copies.



25. **Click:** **OK** after completing the Bypass tray Paper Select setup on the MFP.

At the MFP:

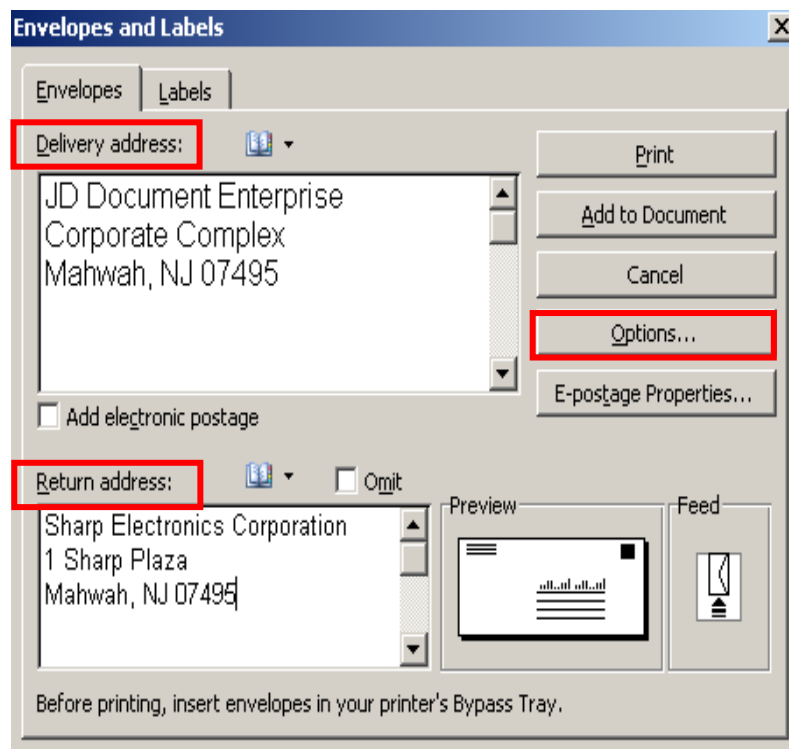
1. **Add:** **Envelope(s)** in the designated position on the Bypass tray.
2. **Touch:** **Paper Select** on the LCD panel.
3. **Touch:** The **paper type** in the button under Bypass.
4. **Touch:** **Envelope**.
5. **Touch:** **COM-10**.
6. **Touch:** **OK** twice. The Bypass is now set up for Envelopes.
7. **Return:** **Paper Select** option to original setup after printing is completed.

4. Envelope printing for MX-M350 & MX-M450

If you are not using the DU4 Duplex Unit with attached Bypass, you can print envelopes for this model using "Tray 2" in the desk unit. The paper settings differ from the other MX models instructions.

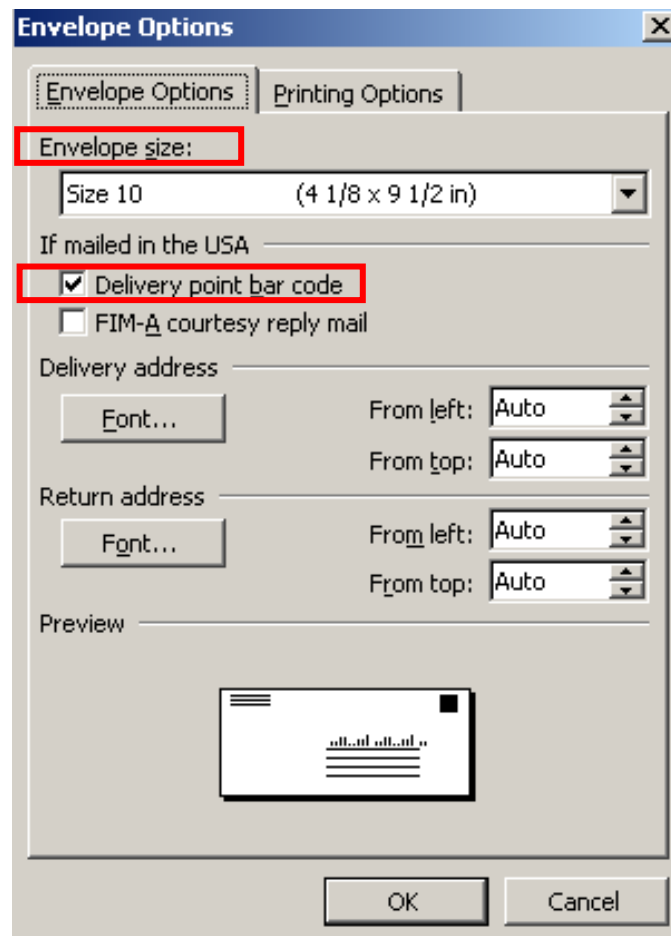
At the PC:

1. **Open:** **New Microsoft Word Document.**
2. **Select:** **Tools** from the header bar.
3. **Click:** **Letters and Mailings** from the menu.
4. **Choose:** **Envelopes and Labels.**
5. **Select:** **Envelope** tab.
6. **Type:** **Delivery address** for the recipient in the Delivery address box.
7. **Type:** **Return address** for the sender in the Return address box.



Continued on Next Page

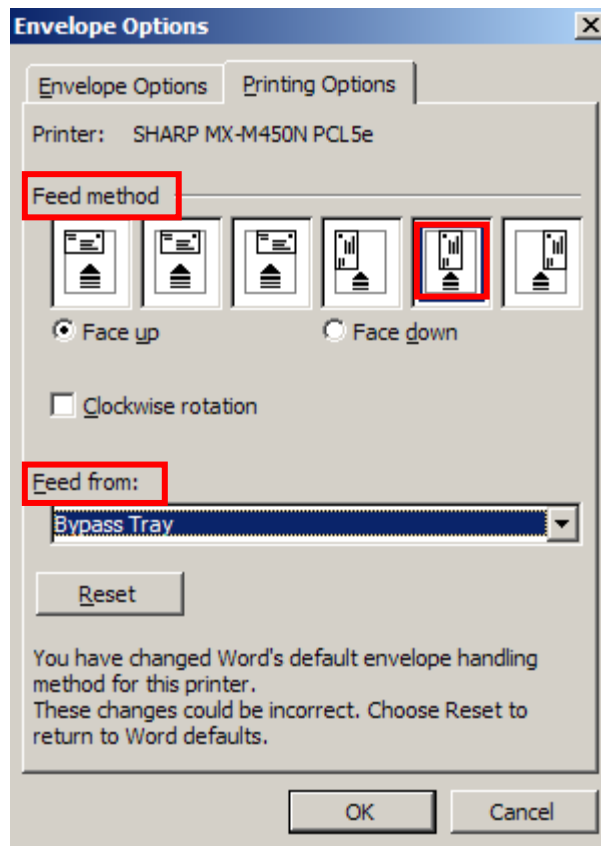
8. **Click:** Options button.
9. **Click:** Envelope Options tab.
10. **Select:** Size 10 or COM 10 from the Envelope Size drop-down.
11. **Click:** Delivery point bar code box under If mailed in the USA.
 - i. *You can change the font attributes for the Delivery address and the Return address by clicking the appropriate Font button.



Continued on Next Page

22 OF 27

12. **Select:** **Printing Options** button.
13. **Click:** **Face up** radio button from Feed Method.
14. **Click:** **2nd to last icon** representing envelope image face-down in the center of the box.
15. **Select:** **Bypass tray, if using the DU4 Duplex Unit with attached Bypass**, from the Feed from drop-down.

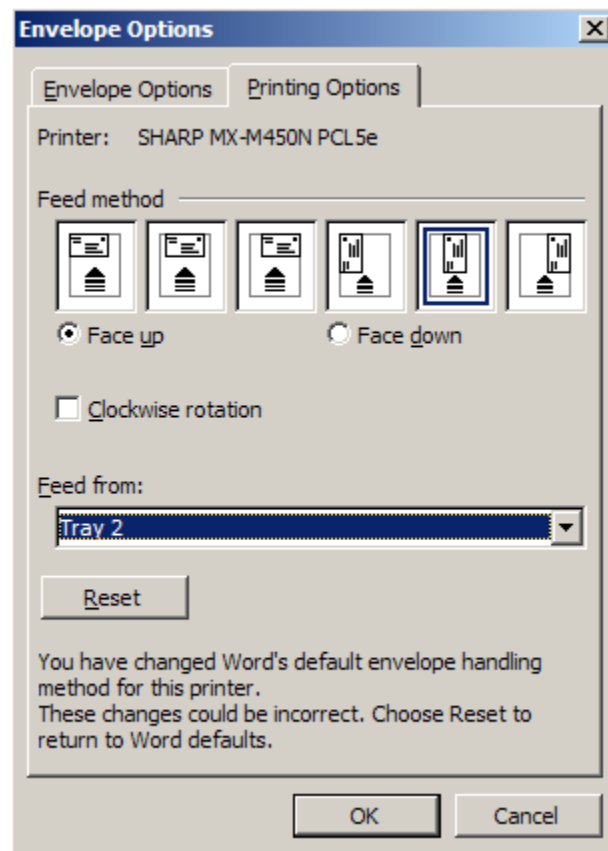


16. **Click:** **OK** button.

Continued on Next Page

OR

17. **Click:** **Face up** radio button from Feed Method.
18. **Click:** **2nd to last icon** representing envelope image face-down in the center of the box.
19. **Select:** **Tray "2"**, if there is no **Bypass**, from the Feed from drop-down.

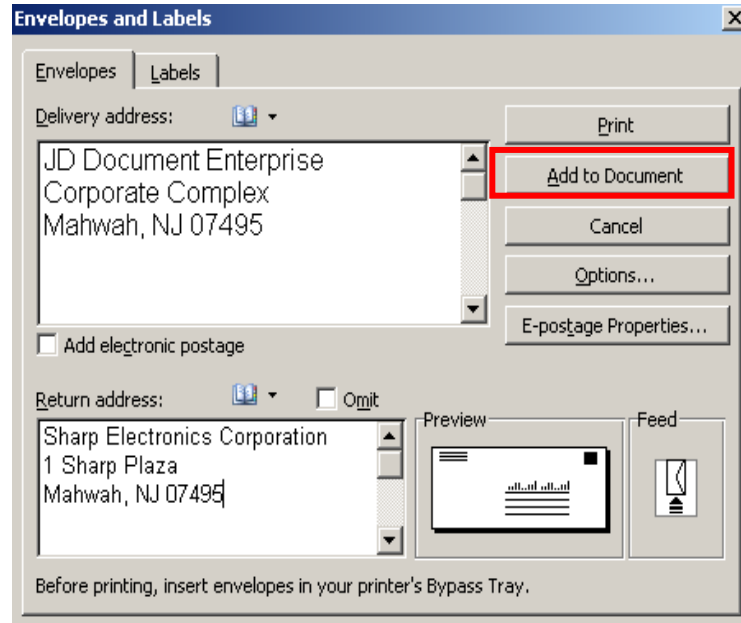


20. **Click:** **OK** button.

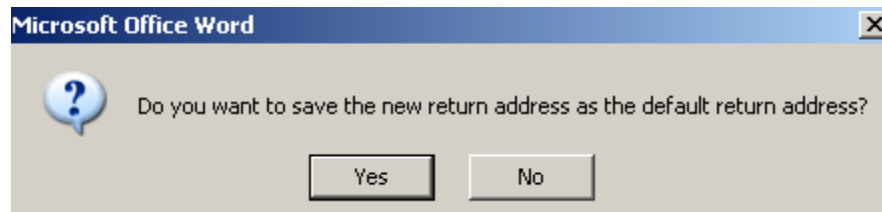
Continued on Next Page

24 OF 27

21. **Click:** **Add to Document** in the Envelopes and Labels dialogue window.

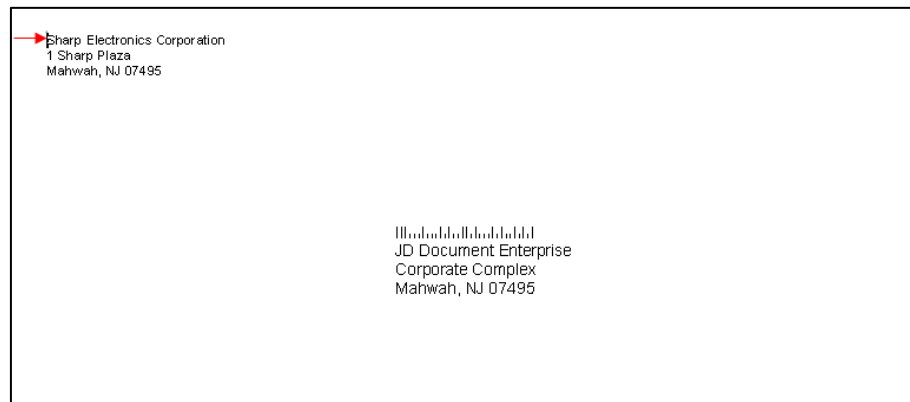


22. **Click:** **NO** when the pop-up message appears.



Continued on Next Page

23. **Place:** **Cursor** on the return address on the envelope so that it is blinking.



24. **Click:** **File**.
25. **Select:** **Page Setup**.
26. **Select:** **Letter** from the Paper size drop-down.
27. **Select:** **Bypass Tray**, if using the Bypass OR Tray "2" if you are not using the Bypass Tray.
28. **Click:** **OK**.

NOTE: Before printing, you must first release the fuser pressure.

29. **Click:** **File**.
30. **Select:** **Print**.
31. **Select:** **Sharp printer** you will use to print.
32. **Click:** **OK** after completing the Bypass tray Paper Select setup on the MFP.

At the MFP:

1. **Add:** **Envelope(s)** in the designated position on the Bypass tray for printing envelopes from the Bypass Tray.

Continued on Next Page

2. **Touch:** **Paper Select** on the LCD panel.
3. **Touch:** The **paper type** in the button under Bypass.
4. **Touch:** **Envelope**.
5. **Touch:** **COM-10**.
6. **Touch:** **OK** twice. The Bypass is now set up for Envelopes.

OR

7. **Add:** **Envelope(s)** in the designated position in Tray "2" for printing envelopes from Tray "2".
NOTE: The envelope diagram in Tray "2" illustrates how to position the envelope. The dotted line indicates that the envelope is face-up.



8. **Close:** **Tray "2"**. The tray is now set up for Envelopes.
7. **Return:** **Paper Select** option to original setup after printing is completed.

Sharp and is a registered trademarks of Sharp Corporation. All other trademarks are the property of their respective holders. Microsoft Word is a registered trademark of Microsoft Corporation.

All Rights Reserved

©2010 Sharp Electronics Corporation

27 OF 27